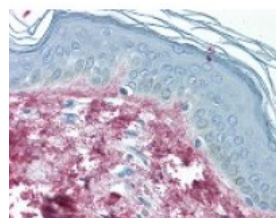




COL3A1 Antibody (biotin)

CATALOG NUMBER: 49-394



Immunohistochemistry staining of COL3A1 in skin tissue using COL3A1 Antibody.

Specifications

SPECIES REACTIVITY:	Bovine, Human
TESTED APPLICATIONS:	ELISA, IHC, IP, WB
APPLICATIONS:	COL3A1 antibody can be used in Western Blot starting at 1:2000, and immunohistochemistry starting at 2.5 ug/mL.
USER NOTE:	Optimal dilutions for each application to be determined by the researcher.
IMMUNOGEN:	COL3A1 antibody was raised against amino acids 575 - 588 of COL3A1 (Human).
HOST SPECIES:	Rabbit

Properties

PURIFICATION:	Immunoaffinity Chromatography
PHYSICAL STATE:	Liquid
BUFFER:	0.125 M sodium borate, 0.075 M sodium chloride, 0.005 M EDTA, pH 8.0, 0.01% sodium azide, 10 mg/mL BSA (Immunoglobulin, protease Free).
STORAGE CONDITIONS:	Store COL3A1 antibody at 4 °C prior to opening. This product is stable at 4 °C as an undiluted liquid. Dilute only prior to immediate use. For extended storage mix with an equal volume of glycerol, aliquot contents and freeze at -20 °C or below.
CLONALITY:	Polyclonal
CONJUGATE:	Biotin

Additional Info

ALTERNATE NAMES:	EDS4A
ACCESSION NO.:	P02461
PROTEIN GI NO.:	124056490
OFFICIAL SYMBOL:	COL3A1
GENE ID:	1281

Background

