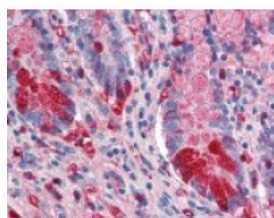




ALPI Antibody

CATALOG NUMBER: 49-380



Immunohistochemistry staining of ALPI in small intestine tissue using ALPI Antibody.

Specifications

SPECIES REACTIVITY:	Human
TESTED APPLICATIONS:	ELISA, IHC, WB
APPLICATIONS:	ALPI antibody can be used in ELISA, and immunohistochemistry starting at 10 ug/mL.
USER NOTE:	Optimal dilutions for each application to be determined by the researcher.
IMMUNOGEN:	ALPI antibody was raised against Alkaline Phosphatase from human intestine (Human).
HOST SPECIES:	Rabbit

Properties

PURIFICATION:	IgG Fractionation
PHYSICAL STATE:	Liquid
BUFFER:	0.01 % sodium azide, 0.02 M potassium phosphate, 0.15 M sodium chloride, dH2O.
STORAGE CONDITIONS:	ALPI antibody should be stored long term (months) at -20 °C and short term (weeks) at 4 °C. As with all antibodies avoid freeze/thaw cycles.
CLONALITY:	Polyclonal
CONJUGATE:	Unconjugated

Additional Info

ALTERNATE NAMES:	ALPI, Alkaline phosphomonoesterase, Kasahara isozyme, Glycerophosphatase, Alkaline Phosphatase, IAP
ACCESSION NO.:	P09923
PROTEIN GI NO.:	130744
OFFICIAL SYMBOL:	ALPI
GENE ID:	248

Background

FOR RESEARCH USE ONLY

