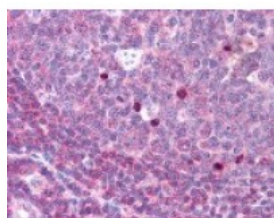




Aurora Kinase B (phospho Thr232) Antibody

CATALOG NUMBER: 49-366



Immunohistochemistry staining of Aurora Kinase B in tonsil tissue using Aurora Kinase B Antibody.

Specifications

SPECIES REACTIVITY:	Human
TESTED APPLICATIONS:	ELISA, IF, IHC, WB
APPLICATIONS:	Aurora Kinase B antibody can be used in ELISA starting at 1:6000 - 1:30000, Western Blot starting at 1:500 - 1:2000, and immunohistochemistry starting at 1.25 ug/mL.
USER NOTE:	Optimal dilutions for each application to be determined by the researcher.
SPECIFICITY:	pThr232
IMMUNOGEN:	Aurora Kinase B antibody was raised against phospho amino acids 223 - 234 of Aurora Kinase B (Human).
HOST SPECIES:	Rabbit

Properties

PURIFICATION:	Immunoaffinity Chromatography
PHYSICAL STATE:	Liquid
BUFFER:	0.02 M potassium phosphate, 0.15 M sodium chloride, pH 7.2, 0.01% sodium azide.
STORAGE CONDITIONS:	Store Aurora Kinase B antibody at 4 °C or -20 °C. As with all antibodies avoid freeze/thaw cycles.
CLONALITY:	Polyclonal
CONJUGATE:	Unconjugated

Additional Info

ALTERNATE NAMES:	AURKB, AIRK2, AIK2, Aurora kinase B, Aurora kinase B-Sv1, Aurora-related kinase 2, Aurora/IPL1-related kinase 2, ARK-2, ARK2, Aurkb-sv1, Aurkb-sv2, Aurora 1, Aurora-B, AIM-1, IPL1, STK-1, STK5, PPP1R48, AurB, Aurora B, Aurora kinase B-Sv2, Aurora-1, Aurora1, Serine/threonine kinase 12, STK1, STK12
ACCESSION NO.:	Q96GD4
PROTEIN GI NO.:	317373473
OFFICIAL SYMBOL:	AURKB
GENE ID:	9212

Background

BACKGROUND:

Aurora Kinase B (also known as Aurora and Ipl1-like midbody-associated protein 1, AIM-1, Aurora/IPL1-related kinase 2, Aurora-related kinase 2, STK-1, and Aurora-B) is a Ser/Thr protein kinase member of the Aurora subfamily that may be directly involved in regulating the cleavage of polar spindle microtubules and is a key regulator for the onset of cytokinesis during mitosis. Aurora Kinase B is localized to the midzone of central spindle in late anaphase and concentrated into the midbody in telophase and cytokinesis and is colocalized with gamma tubulin in the mid-body. High levels of Aurora B expression are seen in the thymus, although it is also expressed in the spleen, lung, testis, colon, placenta and fetal liver. Aurora B is expressed during S and G2/M phase and expression is up-regulated in cancer cells during M phase.

FOR RESEARCH USE ONLY

December 13, 2016