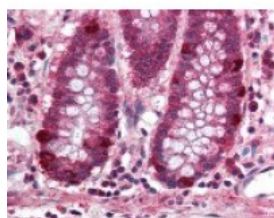




PRDM5 Antibody

CATALOG NUMBER: 49-228



Immunohistochemistry staining of PRDM5
in colon tissue using PRDM5 Antibody.

Specifications

SPECIES REACTIVITY:	Human
TESTED APPLICATIONS:	IHC, WB
APPLICATIONS:	PRDM5 antibody can be used in ELISA, Western Blot starting at 1:500 - 1:1000, and immunohistochemistry starting at 5 ug/mL.
USER NOTE:	Optimal dilutions for each application to be determined by the researcher.
IMMUNOGEN:	PRDM5 antibody was raised against a portion of amino acids 100 - 200 of PRDM5 (Human).
HOST SPECIES:	Rabbit

Properties

PURIFICATION:	Protein G Column
PHYSICAL STATE:	Liquid
BUFFER:	PBS, 0.2% gelatin, 0.05% sodium azide.
STORAGE CONDITIONS:	PRDM5 antibody can be stored short term 4 °C. For long term storage aliquot and store at -20 °C. As with all antibodies avoid freeze/thaw cycles.
CLONALITY:	Polyclonal
CONJUGATE:	Unconjugated

Additional Info

ALTERNATE NAMES:	PRDM5, BCS2, PFM2, PR domain containing 5, PR domain-containing protein 5
ACCESSION NO.:	Q9NQX1
PROTEIN GI NO.:	212276458
OFFICIAL SYMBOL:	PRDM5
GENE ID:	11107

Background

BACKGROUND:	PFM2; PR domain containing 5; Official Gene Symbol- PRDM5 Gene ID- 11107(Human) Gene Map Locus- 4q25-q26(Human) PRDM5, a novel member of PR domain protein family, contains a PR-domain at the NH2
--------------------	--

terminus followed by 16 zinc finger motifs. It is found to have a role in cell differentiation and tumorigenesis. Reports suggest PRDM5 causes G2/M arrest and apoptosis upon infection of tumor cells and has been found to be silenced in breast, ovarian and lung cancers, suggesting a potential clinical significance.

FOR RESEARCH USE ONLY

December 13, 2016