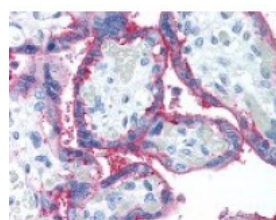




CD59 Antibody [p282]

CATALOG NUMBER: 49-206



Immunohistochemistry staining of CD59 in placenta tissue using CD59 monoclonal Antibody.

Specifications

SPECIES REACTIVITY:	Baboon, Chimpanzee, Human, Monkey
TESTED APPLICATIONS:	FACS, IHC
APPLICATIONS:	CD59 antibody can be used in ELISA, Western Blot, and immunohistochemistry starting at 10 ug/mL.
USER NOTE:	Optimal dilutions for each application to be determined by the researcher.
HOST SPECIES:	Mouse

Properties

PURIFICATION:	Affinity Chromatography
PHYSICAL STATE:	Liquid
BUFFER:	Phosphate-buffered solution, pH 7.2, 0.09% sodium azide.
STORAGE CONDITIONS:	Store CD59 antibody undiluted at 4 °C.
CLONALITY:	Monoclonal
ISOTYPE:	IgG2a,k
CONJUGATE:	Unconjugated

Additional Info

ALTERNATE NAMES:	CD59, 16.3A5, 1F5, 1F5 antigen, CD59 glycoprotein, EL32, EJ16, G344, HRF-20, MAC-IP, MACIF, Ly-6-like protein, MEM43, MIRL, MEM43 antigen, MIN2, MIN3, MSK21, p18-20, Protectin, MAC-inhibitory protein, MIC11, T cell-activating protein, CD59 antigen, EJ30, HRF20, Human leukocyte antigen MIC11, Lymphocytic antigen CD59/MEM43, MIN1
ACCESSION NO.:	P13987
PROTEIN GI NO.:	116021
OFFICIAL SYMBOL:	CD59
GENE ID:	966

Background

