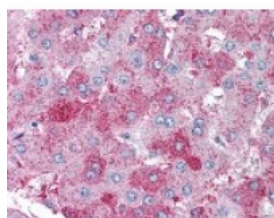




SUPT16H Antibody [8D2]

CATALOG NUMBER: 49-147



Immunohistochemistry staining of
SUPT16H in liver tissue using SUPT16H
monoclonal Antibody.

Specifications

SPECIES REACTIVITY:	Human
TESTED APPLICATIONS:	IHC, WB
APPLICATIONS:	SUPT16H antibody can be used in ELISA, Western Blot starting at 1:500 - 1:1000, and immunohistochemistry starting at 5 ug/mL.
USER NOTE:	Do not freeze
SPECIFICITY:	Human, weakly reacts with mouse Spt16
IMMUNOGEN:	SUPT16H monoclonal antibody was raised against recombinant human SUPT16H (full length).
HOST SPECIES:	Mouse

Properties

PURIFICATION:	Affinity Chromatography
PHYSICAL STATE:	Liquid
BUFFER:	Phosphate-buffered solution, pH 7.2, 0.09% sodium azide. The.
STORAGE CONDITIONS:	Store SUPT16H antibody at 4 °C. Do not freeze.
CLONALITY:	Monoclonal
ISOTYPE:	IgG2a
CONJUGATE:	Unconjugated

Additional Info

ALTERNATE NAMES:	SUPT16H, CDC68, FACT140, FACT, FACT complex subunit SPT16, FACT 140 kDa subunit, HSPT16, SPT16/CDC68, FACTP140
ACCESSION NO.:	Q9Y5B9
PROTEIN GI NO.:	74753511
OFFICIAL SYMBOL:	SUPT16H
GENE ID:	11198

FOR RESEARCH USE ONLY

December 13, 2016