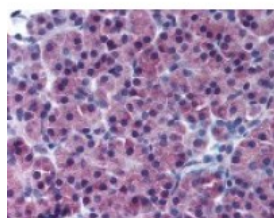




## NR5A2 Antibody

CATALOG NUMBER: 49-125



Immunohistochemistry staining of NR5A2  
in pancreas tissue using NR5A2 Antibody.

### Specifications

<b>SPECIES REACTIVITY:</b>	Human
<b>TESTED APPLICATIONS:</b>	IHC, WB
<b>APPLICATIONS:</b>	NR5A2 antibody can be used in immunohistochemistry starting at 1:50, and flow cytometry.
<b>USER NOTE:</b>	Optimal dilutions for each application to be determined by the researcher.
<b>IMMUNOGEN:</b>	NR5A2 antibody was raised against amino acids 1 - 67 of NR5A2 (Human).
<b>HOST SPECIES:</b>	Rabbit

### Properties

<b>PURIFICATION:</b>	Immunoaffinity Chromatography
<b>PHYSICAL STATE:</b>	Liquid
<b>BUFFER:</b>	Phosphate-buffered solution, pH 7.2, 0.09% sodium azide, 50% glycerol.
<b>STORAGE CONDITIONS:</b>	Aliquot and store NR5A2 antibody at -20 °C. As with all antibodies avoid freeze/thaw cycles.
<b>CLONALITY:</b>	Polyclonal
<b>ISOTYPE:</b>	IgG
<b>CONJUGATE:</b>	Unconjugated

### Additional Info

<b>ALTERNATE NAMES:</b>	NR5A2, B1F, B1F2, B1-binding factor, CPF, CYP7A promoter-binding factor, FTZ-F1beta, FTF, Liver receptor homolog 1, LRH1, LRH-1, HB1F, HB1F-2, Nuclear receptor phr-1, FTZ-F1, Liver receptor homolog-1, Nuclear receptor NR5A2, Receptor phr
<b>ACCESSION NO.:</b>	O00482
<b>PROTEIN GI NO.:</b>	7676156
<b>OFFICIAL SYMBOL:</b>	NR5A2
<b>GENE ID:</b>	2494

### Background

