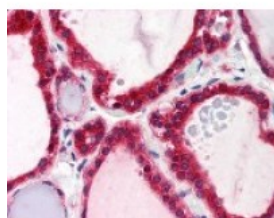




## STIM1 Antibody [CDN3H4]

CATALOG NUMBER: 49-119



Immunohistochemistry staining of STIM1 in thyroid tissue using STIM1 monoclonal Antibody.

### Specifications

|                             |   |
|-----------------------------|---|
| <b>SPECIES REACTIVITY:</b>  | Human, Mouse, Rat   |
| <b>TESTED APPLICATIONS:</b> | ICC, IHC, IP, WB  |
| <b>APPLICATIONS:</b>        | ICC, IHC-P (5 ug/ml), Inhb, IP, WB (1 ug/ml)  |
| <b>USER NOTE:</b>           | Optimal dilutions for each application to be determined by the researcher.  |
| <b>SPECIFICITY:</b>         | Reacts with human and rodent STIM1, a 84 kDa essential and conserved regulator of store-operated Ca <sup>2+</sup> channel function. |
| <b>IMMUNOGEN:</b>           | STIM1 monoclonal antibody was raised against a peptide located in the C-Terminus of STIM1 (Human).                                  |
| <b>HOST SPECIES:</b>        | Mouse   |

### Properties

|                            |   |
|----------------------------|---|
| <b>PURIFICATION:</b>       | Protein A Column  |
| <b>PHYSICAL STATE:</b>     | Liquid  |
| <b>BUFFER:</b>             | PBS, 15 mM sodium azide, approx., pH 7.4.   |
| <b>STORAGE CONDITIONS:</b> | STIM1 antibody can be stored short term 4 °C. For long term storage aliquot and store at -20 °C. As with all antibodies avoid freeze/thaw cycles. |
| <b>CLONALITY:</b>          | Monoclonal  |
| <b>ISOTYPE:</b>            | IgG1  |
| <b>CONJUGATE:</b>          | Unconjugated  |

### Additional Info

|                         |   |
|-------------------------|---|
| <b>ALTERNATE NAMES:</b> | STIM1, D11S4896E, Stromal interaction molecule 1, GOK, STIM1L |
| <b>ACCESSION NO.:</b>   | Q13586  |
| <b>PROTEIN GI NO.:</b>  | 209572721   |
| <b>OFFICIAL SYMBOL:</b> | STIM1   |
| <b>GENE ID:</b>         | 6786  |

FOR RESEARCH USE ONLY

December 13, 2016