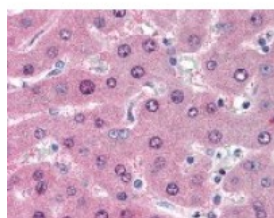




## LIME1 Antibody [LIME-10]

CATALOG NUMBER: 49-117



Immunohistochemistry staining of LIME1  
in liver tissue using LIME1 monoclonal  
Antibody.

### Specifications

<b>SPECIES REACTIVITY:</b>	Human
<b>TESTED APPLICATIONS:</b>	IHC, WB
<b>APPLICATIONS:</b>	IHC-P (10 ug/ml), WB
<b>USER NOTE:</b>	Optimal dilutions for each application to be determined by the researcher.
<b>SPECIFICITY:</b>	Reacts with the cytoplasmic domain of LIME, a 31 kDa Lck-interacting transmembrane adaptor expressed by T cells. LIME1 is a raft-associated transmembrane adaptor phosphoprotein that is preferentially expressed in hemopoietic cells, particularly T cells.
<b>IMMUNOGEN:</b>	LIME1 monoclonal antibody was raised against amino acids 281 - 296 of LIME1 (Human).
<b>HOST SPECIES:</b>	Mouse

### Properties

<b>PURIFICATION:</b>	Protein A Column
<b>PHYSICAL STATE:</b>	Liquid
<b>BUFFER:</b>	PBS, 15 mM sodium azide, approx., pH 7.4.
<b>STORAGE CONDITIONS:</b>	LIME1 antibody can be stored short term 4 °C. For long term storage aliquot and store at -20 °C. As with all antibodies avoid freeze/thaw cycles.
<b>CLONALITY:</b>	Monoclonal
<b>ISOTYPE:</b>	IgG2a
<b>CONJUGATE:</b>	Unconjugated

### Additional Info

<b>ALTERNATE NAMES:</b>	LIME1, DJ583P15.4, Lck-interacting molecule, LIME, RP4-583P15.5, LP8067
<b>ACCESSION NO.:</b>	Q9H400
<b>PROTEIN GI NO.:</b>	74752630
<b>OFFICIAL SYMBOL:</b>	LIME1
<b>GENE ID:</b>	54923

