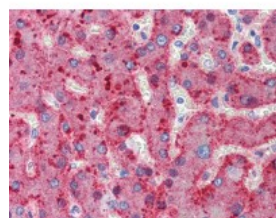




## ALPL Antibody, Monoclonal

CATALOG NUMBER: 49-088



Human liver tissue stained with ALPL  
Antibody, alkaline phosphatase-  
streptavidin and chromogen.

### Specifications

<b>SPECIES REACTIVITY:</b>	Bovine, Human
<b>TESTED APPLICATIONS:</b>	ELISA, IHC, WB
<b>APPLICATIONS:</b>	ALPL antibody can be used in Western Blot, and immunohistochemistry starting at 1 - 2 ug/mL.
<b>USER NOTE:</b>	Optimal dilutions for each application to be determined by the researcher.
<b>SPECIFICITY:</b>	Recognizes Alkaline Phosphatase from human bone. Species cross-reactivity: Alkaline phosphatase from human placenta and calf intestine.
<b>IMMUNOGEN:</b>	Purified alkaline phosphatase (native) from human bone.
<b>HOST SPECIES:</b>	Mouse

### Properties

<b>PURIFICATION:</b>	Protein A Column
<b>PHYSICAL STATE:</b>	Liquid
<b>BUFFER:</b>	PBS, pH 7.2, 0.09% sodium azide
<b>STORAGE CONDITIONS:</b>	ALPL antibody should be stored long term (months) at -20 °C and short term (weeks) at 4 °C. As with all antibodies avoid freeze/thaw cycles.
<b>CLONALITY:</b>	Monoclonal
<b>ISOTYPE:</b>	IgG1
<b>CONJUGATE:</b>	Unconjugated

### Additional Info

<b>ALTERNATE NAMES:</b>	ALPL, Alkaline phosphomonoesterase, AP-TNAP, Alkaline phosphatase liver, APTNAP, Glycerophosphatase, Tissue-nonspecific ALP, TNAP, HOPS, Liver alkaline phosphatase, TNSALP
<b>ACCESSION NO.:</b>	P05186
<b>PROTEIN GI NO.:</b>	68067533
<b>OFFICIAL SYMBOL:</b>	ALPL
<b>GENE ID:</b>	249

