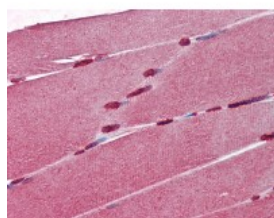




CRABP1 Antibody [AT1A1]

CATALOG NUMBER: 49-079



Human skeletal muscle tissue stained with aCRABP1 Monoclonal Antibody, alkaline phosphatase-streptavidin and chromogen.

Specifications

SPECIES REACTIVITY:	Human, Mouse
TESTED APPLICATIONS:	ELISA, IHC, WB
APPLICATIONS:	CRABP1 antibody can be used in Western Blot starting at 1:500 - 1:1000, and immunohistochemistry starting at 10 ug/mL.
USER NOTE:	Optimal dilutions for each application to be determined by the researcher.
IMMUNOGEN:	Recombinant human CRABP1 (1-137aa) purified from E. coli
HOST SPECIES:	Mouse

Properties

PURIFICATION:	Protein G Column
PHYSICAL STATE:	Liquid
BUFFER:	PBS, pH 7.4, 0.1% sodium azide
STORAGE CONDITIONS:	Aliquot and store CRABP1 antibody at -20 °C. As with all antibodies avoid freeze/thaw cycles.
CLONALITY:	Monoclonal
ISOTYPE:	IgG2b,k
CONJUGATE:	Unconjugated

Additional Info

ALTERNATE NAMES:	CRABP1, CRABP-I, CRABPI, CRABP
ACCESSION NO.:	P29762
PROTEIN GI NO.:	266904
OFFICIAL SYMBOL:	CRABP1
GENE ID:	1381

Background

