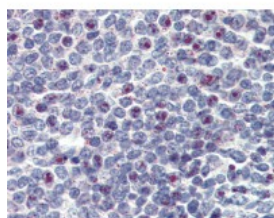




MLL Antibody, Monoclonal

CATALOG NUMBER: 49-066



Human spleen tissue stained with MLL
Antibody, alkaline phosphatase-
streptavidin and chromogen.

Specifications

SPECIES REACTIVITY:	Human
TESTED APPLICATIONS:	ELISA, IHC, WB
APPLICATIONS:	MLL antibody can be used in ELISA starting at 1:4000 - 1:20000, Western Blot starting at 1:1000 - 1:3000, immunohistochemistry starting at 2.5 ug/mL, and immunofluorescence.
USER NOTE:	This product ships on dry ice.
IMMUNOGEN:	Purified truncated recombinant MLL-Trx (aa3751-3968) is expressed in E. coli strain BL21 (DE3) .
HOST SPECIES:	Mouse

Properties

PURIFICATION:	Ascites
PHYSICAL STATE:	Liquid
STORAGE CONDITIONS:	MLL antibody should be stored at -20 °C. As with all antibodies avoid freeze/thaw cycles.
CLONALITY:	Monoclonal
ISOTYPE:	IgG1
CONJUGATE:	Unconjugated

Additional Info

ALTERNATE NAMES:	MLL, ALL1, CDK6/MLL fusion protein, HRX, HTRX, HTRX1, KMT2A, Lysine N-methyltransferase 2A, MLL1A, MLL/GAS7, MLL1, ALL-1, MLL/GAS7 fusion protein, TRX1, WDSTS, Trithorax-like protein, Zinc finger protein HRX, CXXC7, MLL-AF4 der(11) fusion protein, MLL/GMPS fusion protein, TET1-MLL
ACCESSION NO.:	Q03164
PROTEIN GI NO.:	146345435
OFFICIAL SYMBOL:	MLL
GENE ID:	4297

Background

