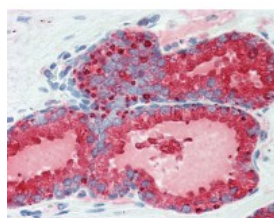




## PSA Antibody [5A11E2]

CATALOG NUMBER: 49-065



Human prostate tissue stained with KLK3  
Antibody, alkaline phosphatase-  
streptavidin and chromogen.

### Specifications

|                             |  |
|-----------------------------|--|
| <b>SPECIES REACTIVITY:</b>  | Human  |
| <b>TESTED APPLICATIONS:</b> | ELISA, FACS, IHC, WB   |
| <b>APPLICATIONS:</b>        | PSA antibody can be used in ELISA, and immunohistochemistry starting at 5 ug/mL.             |
| <b>USER NOTE:</b>           | Optimal dilutions for each application to be determined by the researcher.                   |
| <b>IMMUNOGEN:</b>           | Purified truncated recombinant KLK3-His (aa26-251) is expressed in E. Coli strain BL21 (DE3) |
| <b>HOST SPECIES:</b>        | Mouse  |

### Properties

|                            |   |
|----------------------------|---|
| <b>PURIFICATION:</b>       | Ascites   |
| <b>PHYSICAL STATE:</b>     | Liquid  |
| <b>BUFFER:</b>             | 0.03% sodium azide.   |
| <b>STORAGE CONDITIONS:</b> | PSA antibody can be stored short term 4 °C. For long term storage aliquot and store at -20 °C. As with all antibodies avoid freeze/thaw cycles. |
| <b>CLONALITY:</b>          | Monoclonal  |
| <b>ISOTYPE:</b>            | IgG1  |
| <b>CONJUGATE:</b>          | Unconjugated  |

### Additional Info

|                         |  |
|-------------------------|--|
| <b>ALTERNATE NAMES:</b> | KLK3, APS, Gamma-seminoprotein, Kallikrein-3, Kallikrein-related peptidase 3, P-30 antigen, Prostate specific antigen, Prostate-specific antigen, PSA, Semenogelase, KLK2A1, Semin |
| <b>ACCESSION NO.:</b>   | P07288   |
| <b>PROTEIN GI NO.:</b>  | 130989   |
| <b>OFFICIAL SYMBOL:</b> | KLK3   |
| <b>GENE ID:</b>         | 354  |

### Background

