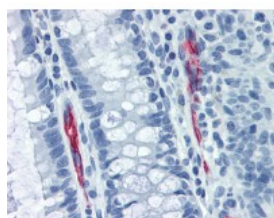




MADCAM1 Antibody [314G8]

CATALOG NUMBER: 49-044



Human colon tissue stained with MADCAM1 Antibody at 10 ug/mL followed by biotinylated anti-mouse IgG secondary antibody, alkaline phosphatase-streptavidin and chromogen.

Specifications

SPECIES REACTIVITY:	Human
TESTED APPLICATIONS:	ELISA, FACS, IHC, WB
APPLICATIONS:	MADCAM1 antibody can be used in ELISA starting at 1:15000 - 1:60000, Western Blot starting at 1:200 - 1:1000, and immunohistochemistry starting at 5 ug/mL.
USER NOTE:	Optimal dilutions for each application to be determined by the researcher.
SPECIFICITY:	Recognizes human mucosal addressin cell adhesion molecule 1 (MAdCAM-1), a 60kD cell surface protein that is involved in lymphocyte trafficking. MAdCAM-1 is expressed on high endothelial venules of Peyer's patches and mesenteric lymph nodes. MAdCAM-1 e ...
IMMUNOGEN:	Recombinant soluble MAdCAM-1-fc fusion protein
HOST SPECIES:	Mouse

Properties

PURIFICATION:	Protein G Column
PHYSICAL STATE:	Liquid
BUFFER:	PBS, pH 7.4.
STORAGE CONDITIONS:	Store MADCAM1 antibody at 4 °C or -20 °C. As with all antibodies avoid freeze/thaw cycles.
CLONALITY:	Monoclonal
ISOTYPE:	IgG 1
CONJUGATE:	Unconjugated

Additional Info

ALTERNATE NAMES:	MADCAM1, HMAcAM-1, MACAM1, MAdCAM-1
ACCESSION NO.:	Q13477
PROTEIN GI NO.:	218511712

OFFICIAL SYMBOL: MADCAM1

GENE ID: 8174

Background

FOR RESEARCH USE ONLY

December 13, 2016