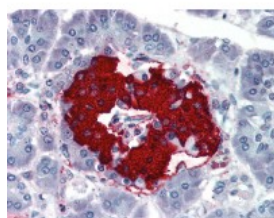




Insulin Antibody, Monoclonal

CATALOG NUMBER: 49-040



Human pancreas tissue stained with INS
Antibody at 10 ug/mL followed by
biotinylated anti-mouse IgG secondary
antibody, alkaline phosphatase-streptavidin
and chromogen.

Specifications

SPECIES REACTIVITY:	Human
TESTED APPLICATIONS:	ELISA, IHC
APPLICATIONS:	Insulin antibody can be used in Western Blot, and immunohistochemistry starting at 10 ug/mL.
USER NOTE:	Optimal dilutions for each application to be determined by the researcher.
SPECIFICITY:	Recognizes Insulin: 100%, Pro-Insulin: 0.2 %.
IMMUNOGEN:	Human insulin.
HOST SPECIES:	Mouse

Properties

PURIFICATION:	Purified
PHYSICAL STATE:	Liquid
BUFFER:	PBS, 0.1% sodium azide, pH 7.4.
STORAGE CONDITIONS:	For long term storage of Insulin antibody add glycerol (40-50%) and store at -20 °C. For short term store at 4 °C.
CLONALITY:	Monoclonal
ISOTYPE:	IgG1
CONJUGATE:	Unconjugated

Additional Info

ALTERNATE NAMES:	INS, IRDN, IDDM2, Preproinsulin, ILPR, Insulin, MODY10, Proinsulin
ACCESSION NO.:	P01308
PROTEIN GI NO.:	124617
OFFICIAL SYMBOL:	INS
GENE ID:	3630

FOR RESEARCH USE ONLY

December 13, 2016