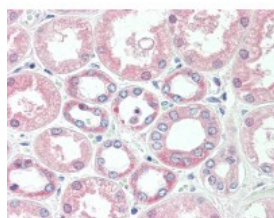




## SOD1 Antibody [2F5]

CATALOG NUMBER: 49-037



Human kidney tissue stained with SOD1  
Antibody at 15 ug/mL followed by  
biotinylated anti-mouse IgG secondary  
antibody, alkaline phosphatase-streptavidin  
and chromogen.

### Specifications

<b>SPECIES REACTIVITY:</b>	Bovine, Human, Mouse
<b>TESTED APPLICATIONS:</b>	ELISA, IHC
<b>APPLICATIONS:</b>	SOD1 antibody can be used in immunocytochemistry starting at 1:50, Western Blot starting at 1:500 - 1:1000, and immunohistochemistry starting at 1:100.
<b>USER NOTE:</b>	Optimal dilutions for each application to be determined by the researcher.
<b>SPECIFICITY:</b>	Recognizes copper/zinc superoxide dismutase (SOD). Superoxide dismutases are ubiquitous metalloproteins that destroy oxygen-mediated free radicals, that are normally produced within the cells, which are toxic to biological systems. There are three fo ...
<b>IMMUNOGEN:</b>	Superoxide dismutase enzyme prepared from bovine erythrocytes
<b>HOST SPECIES:</b>	Mouse

### Properties

<b>PURIFICATION:</b>	Protein G Column
<b>PHYSICAL STATE:</b>	Liquid
<b>BUFFER:</b>	PBS, 0.09% sodium azide, 0.1% BSA.
<b>STORAGE CONDITIONS:</b>	Store SOD1 antibody at 4 °C or -20 °C. As with all antibodies avoid freeze/thaw cycles.
<b>CLONALITY:</b>	Monoclonal
<b>ISOTYPE:</b>	IgG1
<b>CONJUGATE:</b>	Unconjugated

### Additional Info

<b>ALTERNATE NAMES:</b>	SOD1, ALS, ALS1, Cu/Zn superoxide dismutase, HSod1, Homodimer, IPOA, SOD, soluble, SOD, Superoxide dismutase [Cu-Zn], Superoxide dismutase 1, Indophenoloxidase A, Superoxide dismutase, cystolic
<b>ACCESSION NO.:</b>	P00441
<b>PROTEIN GI NO.:</b>	134611

OFFICIAL SYMBOL:	SOD1
GENE ID:	6647

Background

FOR RESEARCH USE ONLY

December 13, 2016