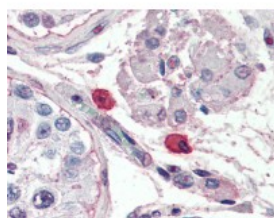




## Fc Epsilon Receptor 1 Antibody [9E1]

CATALOG NUMBER: 49-022



Human Mast cells stained with Fc Epsilon Receptor 1 (FcεR1) Antibody at 10 µg/mL followed by biotinylated anti-mouse IgG secondary antibody, alkaline phosphatase-streptavidin and chromogen.

### Specifications

<b>SPECIES REACTIVITY:</b>	Human
<b>TESTED APPLICATIONS:</b>	ELISA, FACS, IF, IHC, IP, WB
<b>APPLICATIONS:</b>	Fc Epsilon Receptor 1 antibody can be used in Western Blot, and immunohistochemistry starting at 20 µg/mL.
<b>USER NOTE:</b>	Optimal dilutions for each application to be determined by the researcher.
<b>SPECIFICITY:</b>	Recognizes the human high affinity Fc receptor for IgE (Fc epsilon R1), which plays a central role in the IgE-mediated allergic response. Fc epsilon R1 consists of four subunits, a high affinity IgE binding alpha subunit, a beta chain and two disulfide ...
<b>HOST SPECIES:</b>	Mouse

### Properties

<b>PURIFICATION:</b>	Affinity Chromatography
<b>PHYSICAL STATE:</b>	Liquid
<b>BUFFER:</b>	PBS, pH 7.4, 0.09% sodium azide.
<b>STORAGE CONDITIONS:</b>	Store Fc Epsilon Receptor 1 antibody at 4 °C or -20 °C. As with all antibodies avoid freeze/thaw cycles.
<b>CLONALITY:</b>	Monoclonal
<b>ISOTYPE:</b>	IgG2b
<b>CONJUGATE:</b>	Unconjugated

### Additional Info

<b>ALTERNATE NAMES:</b>	FceR1, FCE1A, High affinity immunoglobulin epsilon receptor subunit alpha, Fc-epsilon RI-alpha, FcERI
<b>ACCESSION NO.:</b>	P12319
<b>PROTEIN GI NO.:</b>	119865
<b>OFFICIAL SYMBOL:</b>	FCER1A
<b>GENE ID:</b>	2205

