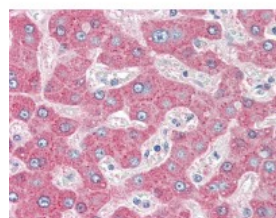




SERPINA1 Antibody, Monoclonal

CATALOG NUMBER: 49-015



Human liver tissue stained with SERPINA1 Antibody at 5 ug/mL followed by biotinylated anti-mouse IgG secondary antibody, alkaline phosphatase-streptavidin and chromogen.

Specifications

SPECIES REACTIVITY:	Human
TESTED APPLICATIONS:	ELISA, IHC
APPLICATIONS:	SERPINA1 antibody can be used in Western Blot, and immunohistochemistry starting at 10 ug/mL.
USER NOTE:	Optimal dilutions for each application to be determined by the researcher.
SPECIFICITY:	Recognizes human alpha-1-Antitrypsin. No cross-reactivity with alpha-1-acid glycoprotein, serum albumin or other serum proteins.
IMMUNOGEN:	Purified human alpha-1-Antitrypsin
HOST SPECIES:	Mouse

Properties

PURIFICATION:	Protein A Column
PHYSICAL STATE:	Liquid
BUFFER:	PBS, pH 7.4, 0.1% sodium azide.
STORAGE CONDITIONS:	Store SERPINA1 antibody at 4 °C or -20 °C. As with all antibodies avoid freeze/thaw cycles.
CLONALITY:	Monoclonal
ISOTYPE:	IgG2a
CONJUGATE:	Unconjugated

Additional Info

ALTERNATE NAMES:	SERPINA1, A1A, A1AT, AAT, Alpha 1 Antitrypsin, Alpha-1 protease inhibitor, Alpha-1-antiproteinase, Alpha-1-antitrypsin, Alpha1AT, PRO2275, Alpha-1-antitrypsin null, P11, Serpin A1
ACCESSION NO.:	P01009
PROTEIN GI NO.:	1703025
OFFICIAL SYMBOL:	SERPINA1

GENE ID: 5265

Background

FOR RESEARCH USE ONLY

December 13, 2016