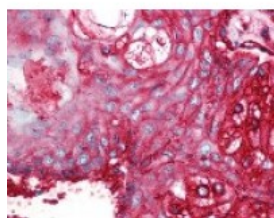




## CD59 Antibody [MEM-43/5]

CATALOG NUMBER: 48-992



Immunohistochemistry staining of CD59 in skin, pilosebaceous unit tissue using CD59 monoclonal Antibody.

### Specifications

<b>SPECIES REACTIVITY:</b>	Human, Mouse
<b>TESTED APPLICATIONS:</b>	FACS, IHC, IP, WB
<b>APPLICATIONS:</b>	FACS (1 ug/ml), IHC-P (5 ug/ml), IP, WB (1 - 2 ug/ml)
<b>USER NOTE:</b>	Optimal dilutions for each application to be determined by the researcher.
<b>SPECIFICITY:</b>	The antibody MEM-43/5 reacts with well defined epitope (around L33) on CD59 (Protectin), a 18-20 kDa glycosylphosphatidylinositol (GPI)-anchored glycoprotein expressed on all hematopoietic cells; it is widely present on cells in all tissues. The MEM-43/5 does not compete with most other CD59 antibodies.
<b>IMMUNOGEN:</b>	CD59 monoclonal antibody was raised against Thymocytes and T lymphocytes (Human).
<b>HOST SPECIES:</b>	Mouse

### Properties

<b>PURIFICATION:</b>	Protein A Column
<b>PHYSICAL STATE:</b>	Liquid
<b>BUFFER:</b>	PBS, 15 mM sodium azide, approx., pH 7.4.
<b>STORAGE CONDITIONS:</b>	CD59 antibody can be stored short term 4 °C. For long term storage aliquot and store at -20 °C. As with all antibodies avoid freeze/thaw cycles.
<b>CLONALITY:</b>	Monoclonal
<b>ISOTYPE:</b>	IgG2b
<b>CONJUGATE:</b>	Unconjugated

### Additional Info

<b>ALTERNATE NAMES:</b>	CD59, 16.3A5, 1F5, 1F5 antigen, CD59 glycoprotein, EL32, EJ16, G344, HRF-20, MAC-IP, MACIF, Ly-6-like protein, MEM43, M1RL, MEM43 antigen, MIN2, MIN3, MSK21, p18-20, Protectin, MAC-inhibitory protein, MIC11, T cell-activating protein, CD59 antigen, EJ30, HRF20, Human leukocyte antigen MIC11, Lymphocytic antigen CD59/MEM43, MIN1
<b>ACCESSION NO.:</b>	P13987
<b>PROTEIN GI NO.:</b>	116021

OFFICIAL SYMBOL:	CD59
GENE ID:	966

**Background**

FOR RESEARCH USE ONLY

December 13, 2016