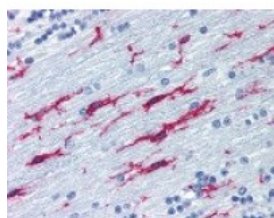




Integrin beta 2 Antibody [MEM-48]

CATALOG NUMBER: 48-988



Immunohistochemistry staining of Integrin beta 2 in cerebellum tissue using Integrin beta 2 monoclonal Antibody.

Specifications

SPECIES REACTIVITY:	Human
TESTED APPLICATIONS:	FACS, IHC, IP, WB
APPLICATIONS:	FACS (2 ug/ml), Func, IHC-Fr, IHC-P (10 ug/ml), IP (2 ug/ml), WB (2 ug/ml)
USER NOTE:	Optimal dilutions for each application to be determined by the researcher.
SPECIFICITY:	Recongizes an epitope involving residues 534-546 in cysteine-rich repeat 3 of the CD18 antigen (integrin beta2 subunit; beta2 integrin).
IMMUNOGEN:	Integrin beta 2 monoclonal antibody was raised against Integrin beta 2 (Human).
HOST SPECIES:	Mouse

Properties

PURIFICATION:	Protein A Column
PHYSICAL STATE:	Liquid
BUFFER:	PBS, 15 mM sodium azide, approx., pH 7.4.
STORAGE CONDITIONS:	Integrin beta 2 antibody can be stored short term 4 °C. For long term storage aliquot and store at -20 °C. As with all antibodies avoid freeze/thaw cycles.
CLONALITY:	Monoclonal
ISOTYPE:	IgG1
CONJUGATE:	Unconjugated

Additional Info

ALTERNATE NAMES:	ITGB2, CD18 antigen, CD18, Integrin beta chain, beta 2, LCAMB, MAC-1, MFI7, MF17, Integrin beta-2, LAD, LFA-1
ACCESSION NO.:	P05107
PROTEIN GI NO.:	124056465
OFFICIAL SYMBOL:	ITGB2
GENE ID:	3689

Background

BACKGROUND: CD18 is a 90-95 kDa type I transmembrane protein expressed on all leukocytes. The ITGB2 protein product is the integrin beta chain beta 2. Integrins are integral cell-surface proteins composed of an alpha chain and a beta chain. A given chain may combine with multiple partners resulting in different integrins. For example, beta 2 combines with the alpha L chain to form the integrin LFA-1, and combines with the alpha M chain to form the integrin Mac-1. Integrins are known to participate in cell adhesion as well as cell-surface mediated signalling.

FOR RESEARCH USE ONLY

December 13, 2016