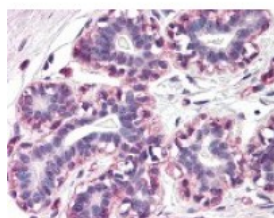




## RAMP3 Antibody

CATALOG NUMBER: 48-972



Immunohistochemistry staining of RAMP3  
in breast (formalin-fixed paraffin  
embedded) tissue using RAMP3 Antibody.

### Specifications

<b>SPECIES REACTIVITY:</b>	Human
<b>TESTED APPLICATIONS:</b>	ELISA, IHC, WB
<b>APPLICATIONS:</b>	RAMP3 antibody can be used in ELISA starting at 1:3000 - 1:6000, Western Blot starting at 1:3000 - 1:6000, immunohistochemistry starting at 10 ug/mL, and immunoprecipitation
<b>USER NOTE:</b>	Optimal dilutions for each application to be determined by the researcher.
<b>IMMUNOGEN:</b>	RAMP3 antibody was raised against a synthetic peptide corresponding to N-Terminal residues of RAMP3 (Human).
<b>HOST SPECIES:</b>	Rabbit

### Properties

<b>PURIFICATION:</b>	Immunoaffinity Chromatography
<b>PHYSICAL STATE:</b>	Liquid
<b>BUFFER:</b>	PBS, 0.01% sodium azide, 50% glycerol.
<b>STORAGE CONDITIONS:</b>	Store RAMP3 antibody at 4 °C or -20 °C. As with all antibodies avoid freeze/thaw cycles.
<b>CLONALITY:</b>	Polyclonal
<b>CONJUGATE:</b>	Unconjugated

### Additional Info

<b>ALTERNATE NAMES:</b>	RAMP3
<b>ACCESSION NO.:</b>	O60896
<b>PROTEIN GI NO.:</b>	11134424
<b>OFFICIAL SYMBOL:</b>	RAMP3
<b>GENE ID:</b>	10268

### Background

<b>BACKGROUND:</b>	RAMP3 is a member of the RAMP family of single-transmembrane-domain proteins, called receptor-activity-
--------------------	---

modifying proteins. RAMPs are type I transmembrane proteins with an extracellular N terminus and a cytoplasmic C terminus. RAMPs are required to transport calcitonin-receptor-like receptor (CRLR) to the plasma membrane. CRLR, a receptor with seven transmembrane domains, can function as either a calcitonin-gene-related peptide (CGRP) receptor or an adrenomedullin receptor, depending on which members of the RAMP family are expressed. Co-expression of RAMP3 with CRLR results in the production of a functional adrenomedullin receptor.

---

**FOR RESEARCH USE ONLY**

December 13, 2016