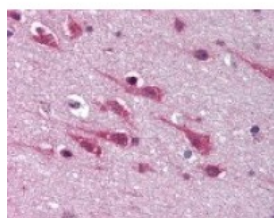




MAPK9 Antibody

CATALOG NUMBER: 48-967



Immunohistochemistry staining of MAPK9
in brain cortex (formalin-fixed paraffin
embedded) tissue using MAPK9 Antibody.

Specifications

SPECIES REACTIVITY:	Human
TESTED APPLICATIONS:	ELISA, IHC, WB
APPLICATIONS:	MAPK9 antibody can be used in Western Blot starting at 1 - 3 ug/mL, and immunohistochemistry starting at 5 ug/mL.
USER NOTE:	Optimal dilutions for each application to be determined by the researcher.
IMMUNOGEN:	MAPK9 antibody was raised against a synthetic peptide corresponding to C-Terminal residues of MAPK9 (Human).
HOST SPECIES:	Rabbit

Properties

PURIFICATION:	Immunoaffinity Chromatography
PHYSICAL STATE:	Liquid
BUFFER:	PBS, 0.01% sodium azide, 50% glycerol.
STORAGE CONDITIONS:	Store MAPK9 antibody at 4 °C or -20 °C. As with all antibodies avoid freeze/thaw cycles.
CLONALITY:	Polyclonal
CONJUGATE:	Unconjugated

Additional Info

ALTERNATE NAMES:	MAPK9, C-Jun kinase 2, C-Jun N-terminal kinase 2, JNK2B, JNK2, JNK2ALPHA, MAP kinase 9, p54a, JNK2BETA, PRKM9, SAPK, MAPK 9, p54aSAPK, SAPK1a, JNK-55, JNK2A, Jun kinase
ACCESSION NO.:	P45984
PROTEIN GI NO.:	85700366
OFFICIAL SYMBOL:	MAPK9
GENE ID:	5601

Background

