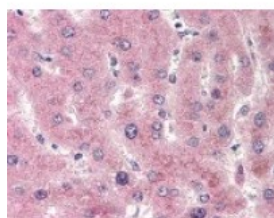




## CYP2E1 Antibody

CATALOG NUMBER: 48-963



Immunohistochemistry staining of CYP2E1 in liver (formalin-fixed paraffin embedded) tissue using CYP2E1 Antibody.

### Specifications

<b>SPECIES REACTIVITY:</b>	Human
<b>TESTED APPLICATIONS:</b>	ELISA, IHC, WB
<b>APPLICATIONS:</b>	CYP2E1 antibody can be used in Western Blot starting at 2 - 4 ug/mL, and immunohistochemistry starting at 5 ug/mL.
<b>USER NOTE:</b>	Optimal dilutions for each application to be determined by the researcher.
<b>IMMUNOGEN:</b>	CYP2E1 antibody was raised against a synthetic peptide corresponding to C-Terminal residues of CYP2E1 (Human).
<b>HOST SPECIES:</b>	Rabbit

### Properties

<b>PURIFICATION:</b>	Immunoaffinity Chromatography
<b>PHYSICAL STATE:</b>	Liquid
<b>BUFFER:</b>	PBS, 0.01% sodium azide, 50% glycerol.
<b>STORAGE CONDITIONS:</b>	Aliquot and store CYP2E1 antibody at -20 °C. As with all antibodies avoid freeze/thaw cycles.
<b>CLONALITY:</b>	Polyclonal
<b>CONJUGATE:</b>	Unconjugated

### Additional Info

<b>ALTERNATE NAMES:</b>	CYP2E1, 4-nitrophenol 2-hydroxylase, CPE1, Cytochrome p450 1Ie1, Cytochrome P450-J, p450C2E, p450-J, CYP2E, CYP1Ie1, Cytochrome P450 2E1
<b>ACCESSION NO.:</b>	P05181
<b>PROTEIN GI NO.:</b>	117250
<b>OFFICIAL SYMBOL:</b>	CYP2E1
<b>GENE ID:</b>	1571

### Background

