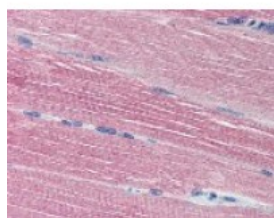




Acetylcholinesterase Antibody

CATALOG NUMBER: 48-958



Immunohistochemistry staining of ACHE in skeletal muscle (formalin-fixed paraffin embedded) tissue using ACHE Antibody.

Specifications

SPECIES REACTIVITY:	Human
TESTED APPLICATIONS:	IHC, WB
APPLICATIONS:	Acetylcholinesterase antibody can be used in ELISA, Western Blot, immunohistochemistry starting at 5 ug/mL, and immunofluorescence starting at 10 ug/mL.
USER NOTE:	Optimal dilutions for each application to be determined by the researcher.
IMMUNOGEN:	Acetylcholinesterase antibody was raised against a synthetic peptide corresponding to N-Terminal residues of Acetylcholinesterase (Human).
HOST SPECIES:	Rabbit

Properties

PURIFICATION:	Immunoaffinity Chromatography
PHYSICAL STATE:	Liquid
BUFFER:	PBS, 0.01% sodium azide, 50% glycerol.
STORAGE CONDITIONS:	Store Acetylcholinesterase antibody at 4 °C or -20 °C. As with all antibodies avoid freeze/thaw cycles.
CLONALITY:	Polyclonal
CONJUGATE:	Unconjugated

Additional Info

ALTERNATE NAMES:	ACHE, ACEE, Acetylcholinesterase, N-ACHE, Yt blood group, ARACHE, YT
ACCESSION NO.:	P22303
PROTEIN GI NO.:	113037
OFFICIAL SYMBOL:	ACHE
GENE ID:	43

Background

BACKGROUND: The acetylcholinesterase antibody is used for detection of ACHE using ELISA, Western Blot, or

immunohistochemistry. Acetylcholinesterase is involved in termination of signal transmission at neuromuscular junctions. This custom polyclonal antibody of acetylcholinesterase should be stored at 4 °C or -20 °C. As with all antibodies avoid freeze/thaw cycles.

FOR RESEARCH USE ONLY

December 13, 2016