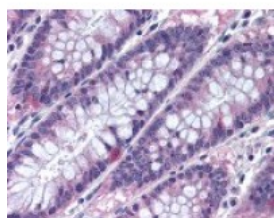




Metastasis Suppressor 1 Antibody

CATALOG NUMBER: 48-957



Immunohistochemistry staining of
Metastasis Suppressor 1 in colon
(formalin-fixed paraffin embedded) tissue
using Metastasis Suppressor 1 Antibody.

Specifications

SPECIES REACTIVITY:	Bovine, Chimpanzee, Dog, Horse, Human, Mouse, Rat
TESTED APPLICATIONS:	IHC, WB
APPLICATIONS:	Metastasis Suppressor 1 antibody can be used in ELISA, Western Blot, immunohistochemistry starting at 5 ug/mL, and immunofluorescence starting at 10 ug/mL.
USER NOTE:	Optimal dilutions for each application to be determined by the researcher.
SPECIFICITY:	A portion of amino acid 670-720 of human MTSS1 protein.
IMMUNOGEN:	A portion of amino acid 670-720 of human MTSS1 protein.
HOST SPECIES:	Rabbit

Properties

PURIFICATION:	Protein G Column
PHYSICAL STATE:	Liquid
BUFFER:	PBS, 0.05% BSA, 0.05% sodium azide.
STORAGE CONDITIONS:	Metastasis Suppressor 1 antibody should be stored long term (months) at -20 °C and short term (weeks) at 4 °C. As with all antibodies avoid freeze/thaw cycles.
CLONALITY:	Polyclonal
ISOTYPE:	IgG
CONJUGATE:	Unconjugated

Additional Info

ALTERNATE NAMES:	MTSS1, KIAA0429, Metastasis suppressor YGL-1, MIM, MIMA, MIMB, Missing in metastasis protein, Metastasis suppressor 1
ACCESSION NO.:	O43312
PROTEIN GI NO.:	30923156
OFFICIAL SYMBOL:	MTSS1

Background

FOR RESEARCH USE ONLY

December 13, 2016