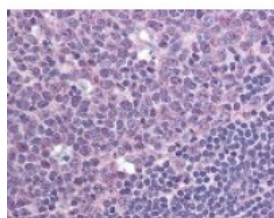




CXCR7 Antibody

CATALOG NUMBER: 48-954



Immunohistochemistry staining of CXCR7
in tonsil (formalin-fixed paraffin embedded)
tissue using CXCR7 Antibody.

Specifications

SPECIES REACTIVITY:	Bat, Bovine, Dog, Gibbon, Gorilla, Hamster, Horse, Human, Monkey, Mouse, Pig, Rabbit, Rat
TESTED APPLICATIONS:	FACS, IHC, WB
APPLICATIONS:	CXCR7 antibody can be used in immunohistochemistry, Western Blot starting at 1:500, and immunohistochemistry starting at 1:100.
USER NOTE:	Optimal dilutions for each application to be determined by the researcher.
SPECIFICITY:	A portion of amino acids 100-150 of human RDC1.
IMMUNOGEN:	CXCR7 antibody was raised against a portion of amino acids 100 - 150 of CXCR7 (Human).
HOST SPECIES:	Rabbit

Properties

PURIFICATION:	Protein G Column
PHYSICAL STATE:	Liquid
BUFFER:	PBS, 0.05% sodium azide.
CONCENTRATION:	1 mg/ml
STORAGE CONDITIONS:	CXCR7 antibody can be stored short term 4 °C. For long term storage aliquot and store at -20 °C. As with all antibodies avoid freeze/thaw cycles.
CLONALITY:	Polyclonal
ISOTYPE:	IgG
CONJUGATE:	Unconjugated

Additional Info

ALTERNATE NAMES:	CXCR7, Chemokine orphan receptor 1, CMKOR1, CXC-R7, GPRN1, RDC1, RDC-1, CXCR-7, G-protein coupled receptor 159, GPR159
ACCESSION NO.:	P25106
PROTEIN GI NO.:	115502380
OFFICIAL SYMBOL:	CXCR7

GENE ID: 57007

Background

BACKGROUND: RDC1 was originally considered to be an Adrenomedullin receptor that binds calcitonin gene-related peptide (CGRP) and adrenomedullin. RDC1 and GPRN1 represent two tissue-specific subtypes of the same 60- kDa receptor. RDC1 has the structural characteristics of a chemokine receptor. Recently it has been shown that RDC1 binds to the chemokine CXCL12 and should be considered to be a chemokine receptor.

FOR RESEARCH USE ONLY

December 13, 2016