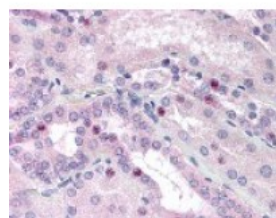




CEBPB Antibody [21A1]

CATALOG NUMBER: 48-839



Immunohistochemistry staining of CEBPB
in kidney tissue using CEBPB monoclonal
Antibody.

Specifications

SPECIES REACTIVITY:	Human
TESTED APPLICATIONS:	IHC, IP, WB
APPLICATIONS:	CEBPB antibody can be used in ELISA starting at 2.5 ug/mL, Western Blot starting at 1:500 - 1:1000, and immunohistochemistry starting at 5 ug/mL.
USER NOTE:	This product ships on dry ice.
IMMUNOGEN:	CEBPB monoclonal antibody was raised against amino acids 39 - 78 of CEBPB (Human).
HOST SPECIES:	Mouse

Properties

PURIFICATION:	Protein G Column
PHYSICAL STATE:	Liquid
BUFFER:	PBS, pH 7.4. No preservative added.
STORAGE CONDITIONS:	Store CEBPB antibody at -20 °C. As with all antibodies avoid freeze/thaw cycles.
CLONALITY:	Monoclonal
ISOTYPE:	IgG
CONJUGATE:	Unconjugated

Additional Info

ALTERNATE NAMES:	CEBPB, C/EBP-beta, C/EBP beta, CRP2, LAP, Liver activator protein, Nuclear factor NF-IL6, IL6DBP, TCF5, NFIL6, TCF-5, Transcription factor 5, NF-IL6
ACCESSION NO.:	P17676
PROTEIN GI NO.:	34223718
OFFICIAL SYMBOL:	CEBPB
GENE ID:	1051

Background

BACKGROUND:

NF-IL6 is a member of the CAAT/enhancer-binding protein (C/EBP) family of transcription factors. It has been shown to directly interact with the retinoblastoma (RB) protein.

FOR RESEARCH USE ONLY

December 13, 2016