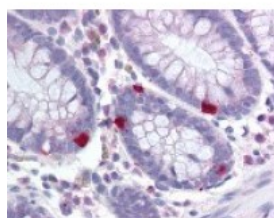




Polo-Like Kinase Antibody

CATALOG NUMBER: 48-825



Immunohistochemistry staining of Polo-like kinase in colon tissue using Polo-like kinase Antibody.

Specifications

SPECIES REACTIVITY:	Human
TESTED APPLICATIONS:	IHC, IP, WB
APPLICATIONS:	Polo-Like Kinase antibody can be used in Western Blot, and immunohistochemistry starting at 20 ug/mL.
USER NOTE:	Optimal dilutions for each application to be determined by the researcher.
IMMUNOGEN:	Polo - Like Kinase antibody was raised against recombinant (partial) region of Polo - Like Kinase (Human).
HOST SPECIES:	Rabbit

Properties

PURIFICATION:	Immunoaffinity Chromatography
PHYSICAL STATE:	Liquid
BUFFER:	Phosphate-buffered solution, pH 7.2, 0.09% sodium azide, 50% glycerol.
STORAGE CONDITIONS:	Store Polo-Like Kinase antibody at 4 °C or -20 °C. As with all antibodies avoid freeze/thaw cycles.
CLONALITY:	Polyclonal
ISOTYPE:	IgG
CONJUGATE:	Unconjugated

Additional Info

ALTERNATE NAMES:	PLK1, Polo like kinase, Polo-like kinase (Drosophila), Polo-like kinase 1, STPK13, Polo (Drosophila)-like kinase, PLK, PLK-1
ACCESSION NO.:	P53350
PROTEIN GI NO.:	1709658
OFFICIAL SYMBOL:	PLK1
GENE ID:	5347

Background

BACKGROUND: PLK, a Polo type protein kinase, has been shown to function in mitosis. The mRNA is absent or expressed at

very low levels during the G1 phase, begins to reaccumulate during the S phase, and reaches maximal levels during the G2/M phase. PLK1 may participate in targeting MPF to the nucleus during prophase and in regulating mitotic spindle function. These functions, in addition to its expression in proliferating cells, suggest that PLK1 has a role in cancer progression.

FOR RESEARCH USE ONLY

December 13, 2016