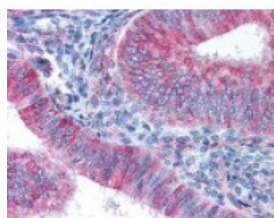




GJA1 Antibody

CATALOG NUMBER: 48-697



Immunohistochemistry staining of GJA1 in uterus tissue using GJA1 Antibody.

Specifications

SPECIES REACTIVITY:	Human, Mouse, Rat
TESTED APPLICATIONS:	IHC, WB
APPLICATIONS:	GJA1 antibody can be used in ELISA, Western Blot starting at 1:500 - 1:2000, immunohistochemistry starting at 1:200, and immunofluorescence starting at 1:200 - 1:1000.
USER NOTE:	Optimal dilutions for each application to be determined by the researcher.
SPECIFICITY:	pSer367
IMMUNOGEN:	GJA1 antibody was raised against amino acids surrounding Ser 367 of GJA1 (Human).
HOST SPECIES:	Rabbit

Properties

PURIFICATION:	Immunoaffinity Chromatography
PHYSICAL STATE:	Liquid
BUFFER:	PBS, 0.02% sodium azide, 50% glycerol.
STORAGE CONDITIONS:	GJA1 antibody should be stored long term (months) at -80 °C and short term (days) at -20 °C. As with all antibodies avoid freeze/thaw cycles.
CLONALITY:	Polyclonal
ISOTYPE:	IgG
CONJUGATE:	Unconjugated

Additional Info

ALTERNATE NAMES:	GJA1, Connexin-43, DFNB38, Connexin 43, Gap junction alpha-1 protein, GJAL, HSS, Gap junction protein alpha 1, ODDD, ODD, AVSD3, CX43, HLHS1, ODOO, SDTY3
ACCESSION NO.:	P17302
PROTEIN GI NO.:	117706
OFFICIAL SYMBOL:	GJA1
GENE ID:	2697

Background

BACKGROUND:

Gap junction protein, alpha 1 is a member of the connexin gene family and a component of gap junctions. Gap junctions are composed of arrays of intercellular channels and provide a route for the diffusion of materials of low molecular weight from cell to cell. Connexin 43 is the major protein of gap junctions in the heart, and gap junctions are thought to have a crucial role in the synchronized contraction of the heart and in embryonic development. Connexin 43 is targeted by several protein kinases that regulate myocardial cell-cell coupling. A related intron-less connexin 43 pseudogene, GJA1P, has been mapped to chromosome 5.

FOR RESEARCH USE ONLY

December 13, 2016