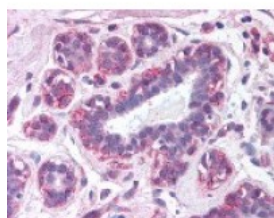




## Leptin Antibody

CATALOG NUMBER: 48-684



Immunohistochemistry staining of Leptin in breast tissue using Leptin Antibody.

### Specifications

<b>SPECIES REACTIVITY:</b>	Human, Mouse
<b>TESTED APPLICATIONS:</b>	ELISA, IHC, WB
<b>APPLICATIONS:</b>	Leptin antibody can be used in ELISA, and immunohistochemistry starting at 40 ug/mL.
<b>USER NOTE:</b>	Optimal dilutions for each application to be determined by the researcher.
<b>IMMUNOGEN:</b>	Leptin antibody was raised against recombinant full length Leptin of 16000 MW produced in E. coli (Mouse).
<b>HOST SPECIES:</b>	Rabbit

### Properties

<b>PURIFICATION:</b>	Antiserum
<b>PHYSICAL STATE:</b>	Liquid
<b>BUFFER:</b>	Contains 0.01% sodium azide
<b>STORAGE CONDITIONS:</b>	Store Leptin antibody at 4 °C or -20 °C. As with all antibodies avoid freeze/thaw cycles.
<b>CLONALITY:</b>	Polyclonal
<b>CONJUGATE:</b>	Unconjugated

### Additional Info

<b>ALTERNATE NAMES:</b>	LEP, Leptin, LEPD, Obese protein, Obese, mouse, homolog of, Obesity factor, OBS, OB
<b>ACCESSION NO.:</b>	P41159
<b>PROTEIN GI NO.:</b>	730218
<b>OFFICIAL SYMBOL:</b>	LEP
<b>GENE ID:</b>	3952

### Background

<b>BACKGROUND:</b>	Leptin has been implicated in the control of appetite and metabolism.
--------------------	---

FOR RESEARCH USE ONLY

