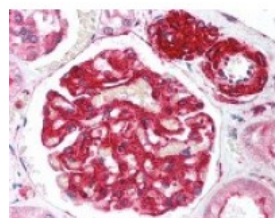


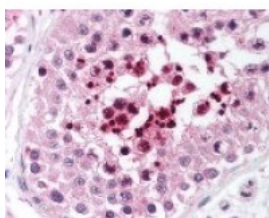


RIF1 Antibody

CATALOG NUMBER: 48-680



Immunohistochemistry staining of RIF1 in kidney tissue using RIF1 Antibody.



Immunohistochemistry staining of RIF1 in testis using RIF1 Antibody.

Specifications

SPECIES REACTIVITY:	Human, Mouse
TESTED APPLICATIONS:	ELISA, IF, IHC, WB
APPLICATIONS:	RImmunofluorescence1 antibody can be used in Western Blot starting at 1:500 - 1:1000, and immunohistochemistry starting at 5 ug/mL.
USER NOTE:	Optimal dilutions for each application to be determined by the researcher.
IMMUNOGEN:	RIF1 antibody was raised against amino acids 2406 - 2419 of RIF1 (Mouse).
HOST SPECIES:	Rabbit

Properties

PURIFICATION:	Immunoaffinity Chromatography
PHYSICAL STATE:	Liquid
BUFFER:	0.02 M potassium phosphate, 0.15 M sodium chloride, pH 7.2, 0.01% sodium azide.
STORAGE CONDITIONS:	Store RIF1 antibody at -20 °C prior to opening. Dilute only prior to immediate use. For extended storage aliquot contents and freeze at -20 °C or below. As with all antibodies avoid freeze/thaw cycles.
CLONALITY:	Polyclonal
CONJUGATE:	Unconjugated

Additional Info

ALTERNATE NAMES:	RIF1
ACCESSION NO.:	Q5UIP0
PROTEIN GI NO.:	68565701
OFFICIAL SYMBOL:	RIF1
GENE ID:	55183

Background

BACKGROUND:	Rif1 (also known as telomere-associated protein RIF1 and Rap1-interacting factor 1) is a mouse ortholog of the yeast Rif1 family of telomere-associated proteins identified on the basis of its high expression in primordial germ
--------------------	--

cells and embryo-derived pluripotent stem cell lines. Mouse Rif1 is a protein involved in negative regulation of telomere length. It is also localized to ATM dependent DNA damage foci and may act at the chromatin level to allow access to some factors.

FOR RESEARCH USE ONLY

December 13, 2016