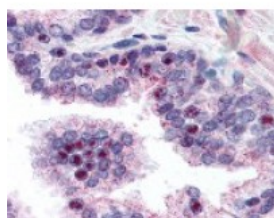




## NEK2 Antibody

CATALOG NUMBER: 48-615



Immunohistochemistry staining of NEK2 in prostate tissue using NEK2 Antibody.

### Specifications

<b>SPECIES REACTIVITY:</b>	Human
<b>TESTED APPLICATIONS:</b>	ELISA, IF, IHC, WB
<b>APPLICATIONS:</b>	NEK2 antibody can be used in ELISA starting at 1:000 - 1:1000, and immunohistochemistry starting at 10 ug/mL.
<b>USER NOTE:</b>	Optimal dilutions for each application to be determined by the researcher.
<b>IMMUNOGEN:</b>	NEK2 antibody was raised against amino acids 287 - 299 of NEK2 (Human).
<b>HOST SPECIES:</b>	Rabbit

### Properties

<b>PURIFICATION:</b>	Immunoaffinity Chromatography
<b>PHYSICAL STATE:</b>	Liquid
<b>BUFFER:</b>	0.02 M potassium phosphate, 0.15 M sodium chloride, pH 7.2, 0.01% sodium azide.
<b>STORAGE CONDITIONS:</b>	Store NEK2 antibody at -20 °C prior to opening. Dilute only prior to immediate use. For extended storage aliquot contents and freeze at -20 °C or below. As with all antibodies avoid freeze/thaw cycles.
<b>CLONALITY:</b>	Polyclonal
<b>CONJUGATE:</b>	Unconjugated

### Additional Info

<b>ALTERNATE NAMES:</b>	NEK2, NIMA-related kinase 2, NEK2A, HsPK21, NimA-like protein kinase 1, NLK1, HSPK 21, NimA-related protein kinase 2
<b>ACCESSION NO.:</b>	P51955
<b>PROTEIN GI NO.:</b>	1709252
<b>OFFICIAL SYMBOL:</b>	NEK2
<b>GENE ID:</b>	4751

### Background

**BACKGROUND:** NEK2, also called serine/threonine-protein kinase Nek2NimA-related protein kinase 2, NimA-like protein kinase 1 and HSPK 21, is a protein kinase involved in mitotic regulation that may have a role at the G2-M transition and

may also play a role in meiosis. NEK2 has a nuclear localization and accumulates throughout S phase and shows maximal levels in late G2. This expression pattern is highly reminiscent of that of A and B cyclins.

---

**FOR RESEARCH USE ONLY**

December 13, 2016