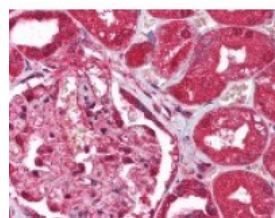




MMP13 Antibody

CATALOG NUMBER: 48-563



Immunohistochemistry staining of MMP13
in kidney tissue using MMP13 Antibody.

Specifications

SPECIES REACTIVITY:	Human, Mouse
TESTED APPLICATIONS:	IHC, WB
APPLICATIONS:	MMP13 antibody can be used in ELISA starting at 1:10000, immunohistochemistry starting at 1:200, and immunofluorescence starting at 1:200 - 1:1000.
USER NOTE:	Optimal dilutions for each application to be determined by the researcher.
IMMUNOGEN:	MMP13 antibody was raised against a peptide from the hinge region of MMP13 (Human).
HOST SPECIES:	Rabbit

Properties

PURIFICATION:	Affinity Chromatography
PHYSICAL STATE:	Liquid
BUFFER:	PBS, pH 7.4, 0.05% sodium azide.
STORAGE CONDITIONS:	Store MMP13 antibody at 4 °C or -20 °C. As with all antibodies avoid freeze/thaw cycles.
CLONALITY:	Polyclonal
CONJUGATE:	Unconjugated

Additional Info

ALTERNATE NAMES:	MMP13, Collagenase 3, Matrix metalloproteinase-13, Interstitial collagenase, MANDP1, MMP-13, CLG3
ACCESSION NO.:	P45452
PROTEIN GI NO.:	1168998
OFFICIAL SYMBOL:	MMP13
GENE ID:	4322

Background

BACKGROUND: MMP13 is a Metallopeptidase M10A type protease. Metalloproteinase 13/Collagenase 3 (MMP13) was originally identified in breast carcinoma and has since been documented in a variety of tumors including chondrosarcomas, basal cell carcinoma, and malignant melanoma. In addition it has been detected in

inflammatory diseases such as atherosclerosis, in wound healing, and in destructive joint diseases such OA and RA. MMP13 degrades the native helix of several types of fibrillar collagen, and extracellular matrix proteins in vitro.

FOR RESEARCH USE ONLY

December 13, 2016