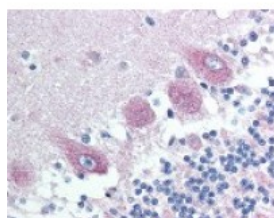




CAM Kinase 2 alpha Antibody

CATALOG NUMBER: 48-510



Immunohistochemistry staining of CAM Kinase 2 alpha in cerebellum tissue using CAM Kinase 2 alpha Antibody.

Specifications

SPECIES REACTIVITY:	Human, Mouse, Rat
TESTED APPLICATIONS:	IHC, WB
APPLICATIONS:	CAM Kinase 2 alpha antibody can be used in ELISA, Western Blot, immunohistochemistry starting at 5 ug/mL, and immunoprecipitation
USER NOTE:	Optimal dilutions for each application to be determined by the researcher.
SPECIFICITY:	pSer286
IMMUNOGEN:	CAM Kinase 2 alpha antibody was raised against amino acids surrounding Serine 286 of CAM Kinase 2 alpha (Human).
HOST SPECIES:	Rabbit

Properties

PURIFICATION:	Immunoaffinity Chromatography
PHYSICAL STATE:	Liquid
BUFFER:	PBS (without Mg2+, Ca2+), pH 7.4, 150 mM sodium chloride, 0.02% sodium azide, 50% glycerol.
STORAGE CONDITIONS:	CAM Kinase 2 alpha antibody can be stored short term 4 °C. For long term storage aliquot and store at -20 °C. As with all antibodies avoid freeze/thaw cycles.
CLONALITY:	Polyclonal
ISOTYPE:	IgG
CONJUGATE:	Unconjugated

Additional Info

ALTERNATE NAMES:	CAMK2A, AlphaCaMKII, CaM-kinase II alpha chain, CaMK-II subunit alpha, CAMKA, CaM kinase II alpha, CaMK II alpha, CaMK-II alpha subunit, CaMKIIalpha, CaM kinase II alpha subunit, CaM kinase II subunit alpha, CaMKII alpha, CaMKIIalpha, KIAA0968
ACCESSION NO.:	Q9UQM7
PROTEIN GI NO.:	296434552

OFFICIAL SYMBOL: CAMK2A

GENE ID: 815

Background

BACKGROUND: CAMK2Alpha, together with the beta, delta, and gamma subunits, constitute the CAMK2 heteromultimeric holoenzyme serine/threonine kinase. CAMK2A has been implicated in learning, where it potentiates synaptic transmission by phosphorylating AMPA receptors. Variants are produced by alternative splicing.

FOR RESEARCH USE ONLY

December 13, 2016