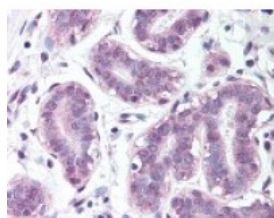




## BRCA1 Antibody

CATALOG NUMBER: 48-508



Immunohistochemistry staining of BRCA1  
in breast tissue using BRCA1 Antibody.

### Specifications

<b>SPECIES REACTIVITY:</b>	Human
<b>TESTED APPLICATIONS:</b>	IHC
<b>APPLICATIONS:</b>	BRCA1 antibody can be used in ELISA, Western Blot, and immunohistochemistry starting at 5 ug/mL.
<b>USER NOTE:</b>	Optimal dilutions for each application to be determined by the researcher.
<b>SPECIFICITY:</b>	pSer1423
<b>IMMUNOGEN:</b>	BRCA1 antibody was raised against amino acids surrounding Serine 1423 of BRCA1 (Human).
<b>HOST SPECIES:</b>	Rabbit

### Properties

<b>PURIFICATION:</b>	Immunoaffinity Chromatography
<b>PHYSICAL STATE:</b>	Liquid
<b>BUFFER:</b>	PBS, 0.02% sodium azide, 50% glycerol.
<b>STORAGE CONDITIONS:</b>	BRCA1 antibody should be stored long term (months) at -80 °C and short term (days) at -20 °C. As with all antibodies avoid freeze/thaw cycles.
<b>CLONALITY:</b>	Polyclonal
<b>ISOTYPE:</b>	IgG
<b>CONJUGATE:</b>	Unconjugated

### Additional Info

<b>ALTERNATE NAMES:</b>	BRCA1, BROVCA1, BRCC1, Breast cancer 1, early onset, PPP1R53, PSCP, PNCA4, RING finger protein 53, RNF53, BRCAI, Breast cancer 1 early onset, IRIS
<b>ACCESSION NO.:</b>	P38398
<b>PROTEIN GI NO.:</b>	728984
<b>OFFICIAL SYMBOL:</b>	BRCA1
<b>GENE ID:</b>	672

### Background

**BACKGROUND:**

Associated with several familial cancers, including breast cancer, ovarian cancer, and prostate cancer. The cumulative lifetime risk of breast cancer for women who carry mutations in BRCA1 is approximately 92%, while the cumulative lifetime risk for noncarriers is estimated to be 10%. BRCA1 and BRCA2 participate together in a pathway (or pathways) associated with the activation of double-strand break repair and/or homologous recombination.

---

**FOR RESEARCH USE ONLY**

December 13, 2016