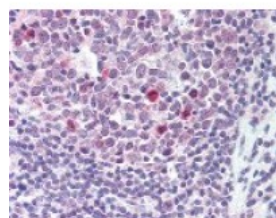




## BCL2 Antibody

CATALOG NUMBER: 48-506



Immunohistochemistry staining of BCL2 in tonsil tissue using BCL2 Antibody.

### Specifications

<b>SPECIES REACTIVITY:</b>	Human
<b>TESTED APPLICATIONS:</b>	IHC
<b>APPLICATIONS:</b>	BCL2 antibody can be used in immunohistochemistry starting at 40 ug/mL, and flow cytometry.
<b>USER NOTE:</b>	Optimal dilutions for each application to be determined by the researcher.
<b>SPECIFICITY:</b>	pSer70
<b>IMMUNOGEN:</b>	BCL2 antibody was raised against amino acids surrounding Serine 70 of BCL2 (Human).
<b>HOST SPECIES:</b>	Rabbit

### Properties

<b>PURIFICATION:</b>	Immunoaffinity Chromatography
<b>PHYSICAL STATE:</b>	Liquid
<b>BUFFER:</b>	PBS, 0.02% sodium azide, 50% glycerol.
<b>STORAGE CONDITIONS:</b>	Store BCL2 antibody at 4 °C or -20 °C. As with all antibodies avoid freeze/thaw cycles.
<b>CLONALITY:</b>	Polyclonal
<b>ISOTYPE:</b>	IgG
<b>CONJUGATE:</b>	Unconjugated

### Additional Info

<b>ALTERNATE NAMES:</b>	BCL2, Apoptosis regulator Bcl-2, B-cell CLL/lymphoma 2, B-cell lymphoma protein 2, Bcl-2, PPP1R50
<b>ACCESSION NO.:</b>	P10415
<b>PROTEIN GI NO.:</b>	231632
<b>OFFICIAL SYMBOL:</b>	BCL2
<b>GENE ID:</b>	596

### Background

<b>BACKGROUND:</b>	Bcl-2 inhibits apoptosis. Translocations that lead to overexpression of this gene are associated with cancer (lymphoma in the case of translocation to the Ig heavy chain locus).
--------------------	---

