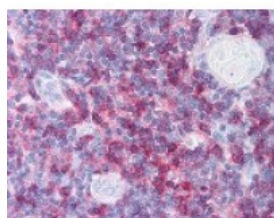




CD8A Antibody

CATALOG NUMBER: 48-455



Immunohistochemistry staining of CD8A in thymus tissue using CD8A Antibody.

Specifications

SPECIES REACTIVITY:	Human
TESTED APPLICATIONS:	IHC
APPLICATIONS:	CD8A antibody can be used in ELISA, Western Blot starting at 1:500 - 1:1000, immunohistochemistry starting at 5 ug/mL, and immunoprecipitation
USER NOTE:	Optimal dilutions for each application to be determined by the researcher.
IMMUNOGEN:	CD8A antibody was raised against a peptide corresponding to the C-Terminal amino acids of CD8A (Human).
HOST SPECIES:	Rabbit

Properties

PHYSICAL STATE:	Liquid
BUFFER:	PBS, pH 7.4, 0.2% BSA, 0.05% sodium azide.
STORAGE CONDITIONS:	Store CD8A antibody at 4 °C, Avoid Freezing
CLONALITY:	Polyclonal
CONJUGATE:	Unconjugated

Additional Info

ALTERNATE NAMES:	CD8A, CD8a molecule, CD8a antigen, OKT8 T-cell antigen, Leu2 T-lymphocyte antigen, T8 T-cell antigen, T cell co-receptor, p32, CD8, Leu2, T-cell antigen Leu2
ACCESSION NO.:	P01732
PROTEIN GI NO.:	116035
OFFICIAL SYMBOL:	CD8A
GENE ID:	925

Background

BACKGROUND:	The CD8 antigen is a cell surface glycoprotein found on most cytotoxic T lymphocytes that mediates efficient cell-cell interactions within the immune system. The CD8 antigen, acting as a coreceptor, and the T-cell receptor on the T lymphocyte recognize antigen displayed by an antigen presenting cell (APC) in the context of class I MHC molecules. The functional coreceptor is either a homodimer composed of two alpha chains, or a
--------------------	--

heterodimer composed of one alpha and one beta chain. Both alpha and beta chains share significant homology to immunoglobulin variable light chains. This gene encodes the CD8 alpha chain isoforms. Two alternative transcripts encoding distinct isoforms, one membrane associated and one secreted, have been identified.

FOR RESEARCH USE ONLY

December 13, 2016