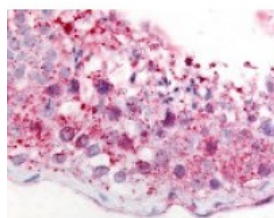




## GPR18 Antibody

CATALOG NUMBER: 48-421



Immunohistochemistry staining of GPR18  
in testis tissue using GPR18 Antibody.

### Specifications

<b>SPECIES REACTIVITY:</b>	Human
<b>TESTED APPLICATIONS:</b>	IHC
<b>APPLICATIONS:</b>	GPR18 antibody can be used in ELISA starting at 1:10000, Western Blot starting at 1:500 - 1:2000, immunohistochemistry starting at 1:200, and immunofluorescence starting at 1:200 - 1:1000.
<b>USER NOTE:</b>	Optimal dilutions for each application to be determined by the researcher.
<b>SPECIFICITY:</b>	BLAST analysis of the peptide immunogen showed no homology with other human proteins.
<b>IMMUNOGEN:</b>	GPR18 antibody was raised against a peptide located in the C-Terminal domain of GPR18 (Human).
<b>HOST SPECIES:</b>	Rabbit

### Properties

<b>PURIFICATION:</b>	Immunoaffinity Chromatography
<b>PHYSICAL STATE:</b>	Liquid
<b>BUFFER:</b>	PBS, 0.1% sodium azide.
<b>STORAGE CONDITIONS:</b>	GPR18 antibody should be stored long term (months) at -80 °C and short term (days) at 4 °C. As with all antibodies avoid freeze/thaw cycles.
<b>CLONALITY:</b>	Polyclonal
<b>CONJUGATE:</b>	Unconjugated

### Additional Info

<b>ALTERNATE NAMES:</b>	GPR18, GPCRW, G protein-coupled receptor 18, NAGly receptor, G-protein coupled receptor 18, N-arachidonyl glycine receptor
<b>ACCESSION NO.:</b>	Q14330
<b>PROTEIN GI NO.:</b>	92087006
<b>OFFICIAL SYMBOL:</b>	GPR18
<b>GENE ID:</b>	2841

### Background

**BACKGROUND:** GPR18 is an Orphan-A GPCR with no known ligand.

---

**FOR RESEARCH USE ONLY**

December 13, 2016