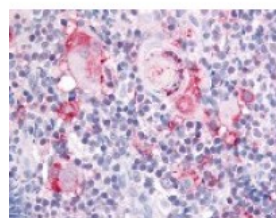




Integrin alpha 2 Antibody

CATALOG NUMBER: 48-405



Immunohistochemistry staining of Integrin alpha 2 in thymus, medulla tissue using Integrin alpha 2 Antibody.

Specifications

SPECIES REACTIVITY:	Dog, Gibbon, Gorilla, Human, Monkey, Pig
TESTED APPLICATIONS:	IHC
APPLICATIONS:	Integrin alpha 2 antibody can be used in ELISA starting at 1:10000, Western Blot starting at 1:500 - 1:2000, and immunohistochemistry starting at 1:200 - 1:400.
USER NOTE:	Optimal dilutions for each application to be determined by the researcher.
SPECIFICITY:	BLAST analysis of the peptide immunogen showed no homology with other human proteins.
IMMUNOGEN:	Integrin alpha 2 antibody was raised against a peptide located near the Extracellular domain of Integrin alpha 2 (Human).
HOST SPECIES:	Rabbit

Properties

PURIFICATION:	Immunoaffinity Chromatography
PHYSICAL STATE:	Liquid
BUFFER:	PBS, 0.1% sodium azide.
STORAGE CONDITIONS:	Integrin alpha 2 antibody should be stored long term (months) at -80 °C and short term (days) at 4 °C. As with all antibodies avoid freeze/thaw cycles.
CLONALITY:	Polyclonal
CONJUGATE:	Unconjugated

Additional Info

ALTERNATE NAMES:	ITGA2, Alpha2 integrin, BR, CD49b antigen, CD49B, Integrin alpha2, Integrin Alpha 2, Integrin alpha-2, HPA-5, VLA-2, VLAA2, VLA-2 subunit alpha, Collagen receptor, GPIa, Platelet antigen Br, Platelet glycoprotein GPIa, VLA2 receptor, alpha-2 subunit
ACCESSION NO.:	P17301
PROTEIN GI NO.:	124942
OFFICIAL SYMBOL:	ITGA2

GENE ID: 3673

Background

BACKGROUND: ITGA2 encodes integrin alpha chain 2. Integrins are heterodimeric integral membrane proteins composed of an alpha chain and a beta chain. The I-domain containing alpha integrin 2 combines with beta integrin 1 to form a collagen-binding integrin referred to as glycoprotein Ia/IIa when expressed on platelets, and very late (activation) antigen 2 ('VLA-2') when found on T-cells. In addition to adhesion, integrins are known to participate in cell-surface mediated signalling.

FOR RESEARCH USE ONLY

December 13, 2016