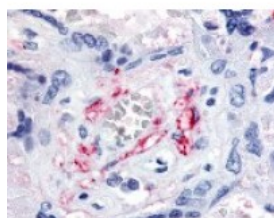




FLT1 Antibody

CATALOG NUMBER: 48-397



Immunohistochemistry staining of FLT1 in placenta, fetal capillary endothelial cells using FLT1 Antibody.

Specifications

SPECIES REACTIVITY:	Gibbon, Gorilla, Human
TESTED APPLICATIONS:	IHC
APPLICATIONS:	FLT1 antibody can be used in ELISA, Western Blot, and immunohistochemistry starting at 5 ug/mL.
USER NOTE:	Optimal dilutions for each application to be determined by the researcher.
SPECIFICITY:	BLAST analysis of the peptide immunogen showed no homology with other human proteins.
IMMUNOGEN:	FLT1 antibody was raised against a peptide located in the N-Terminal domain of FLT1 (Human).
HOST SPECIES:	Rabbit

Properties

PURIFICATION:	Immunoaffinity Chromatography
PHYSICAL STATE:	Liquid
BUFFER:	PBS, 0.1% sodium azide.
STORAGE CONDITIONS:	FLT1 antibody should be stored long term (months) at -80 °C and short term (days) at 4 °C. As with all antibodies avoid freeze/thaw cycles.
CLONALITY:	Polyclonal
CONJUGATE:	Unconjugated

Additional Info

ALTERNATE NAMES:	FLT1, FLT, FLT-1, Fms-related tyrosine kinase 1, SFlt1, VEGF-r1, VEG-R1, Tyrosine-protein kinase FRT, VEGFR-1, Fms-like tyrosine kinase 1, FRT, VEGF receptor 1, VEGF-r1, VEGFR1
ACCESSION NO.:	P17948
PROTEIN GI NO.:	143811474
OFFICIAL SYMBOL:	FLT1
GENE ID:	2321

Background

BACKGROUND:

FLT1 (fms-like tyrosine kinase/vascular endothelial growth factor receptor 1) is a receptor for VEGF, VEGFB, and PGF. This receptor has a large extracellular domain similar to other members of the fms family and has tyrosine kinase activity. The VEGF kinase ligand/receptor signaling system plays a key role in vascular development and regulation of vascular permeability.

FOR RESEARCH USE ONLY

December 13, 2016