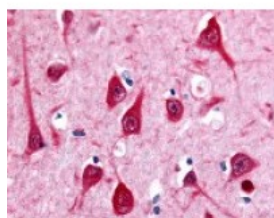




MTNR1B Antibody

CATALOG NUMBER: 48-382



Immunohistochemistry staining of
MTNR1B in hippocampus tissue using
MTNR1B Antibody.

Specifications

| | |
|-----------------------------|--|
| SPECIES REACTIVITY: | Gorilla, Human |
| TESTED APPLICATIONS: | ELISA, IHC |
| APPLICATIONS: | MTNR1B antibody can be used in ELISA, and immunohistochemistry starting at 20 ug/mL. |
| USER NOTE: | Optimal dilutions for each application to be determined by the researcher. |
| SPECIFICITY: | BLAST analysis of the peptide immunogen showed no homology with other human proteins. |
| IMMUNOGEN: | MTNR1B antibody was raised against a peptide located in the C-Terminal cytoplasmic domain of MTNR1B (Human). |
| HOST SPECIES: | Rabbit |

Properties

| | |
|----------------------------|---|
| PURIFICATION: | Immunoaffinity Chromatography |
| PHYSICAL STATE: | Liquid |
| BUFFER: | PBS, 0.1% sodium azide. |
| STORAGE CONDITIONS: | MTNR1B antibody should be stored long term (months) at -80 °C and short term (days) at 4 °C. As with all antibodies avoid freeze/thaw cycles. |
| CLONALITY: | Polyclonal |
| CONJUGATE: | Unconjugated |

Additional Info

| | |
|-------------------------|---|
| ALTERNATE NAMES: | MTNR1B, MEL-1B-R, Mel-1b melatonin receptor, Melatonin receptor 1B, Melatonin receptor MEL1B, Mt2r, MT2 melatonin receptor, Mt2 receptor, Melatonin receptor type 1B, MT2, FGQTL2, Mel1b receptor |
| ACCESSION NO.: | P49286 |
| PROTEIN GI NO.: | 1346548 |
| OFFICIAL SYMBOL: | MTNR1B |
| GENE ID: | 4544 |

Background

BACKGROUND: MTNR1b is a Melatonin Receptor that mediates the effects of melatonin in the retina and the photoperiodic control of neuroendocrine functions. It may also be involved in melatonin-induced immune enhancement.

FOR RESEARCH USE ONLY

December 13, 2016