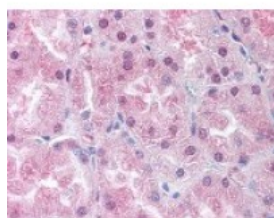




USP33 Antibody

CATALOG NUMBER: 48-378



Immunohistochemistry staining of USP33
in kidney tissue using USP33 Antibody.

Specifications

SPECIES REACTIVITY:	Gorilla, Human
TESTED APPLICATIONS:	IHC
APPLICATIONS:	USP33 antibody can be used in ELISA, Western Blot starting at 1:500 - 1:1000, immunohistochemistry starting at 5 ug/mL, and immunofluorescence starting at 10 ug/mL.
USER NOTE:	Optimal dilutions for each application to be determined by the researcher.
SPECIFICITY:	BLAST analysis of the peptide immunogen showed no homology with other human proteins.
IMMUNOGEN:	USP33 antibody was raised against a peptide located near the internal domain of USP33 (Human).
HOST SPECIES:	Rabbit

Properties

PURIFICATION:	Immunoaffinity Chromatography
PHYSICAL STATE:	Liquid
BUFFER:	PBS, 0.1% sodium azide.
STORAGE CONDITIONS:	USP33 antibody should be stored long term (months) at -80 °C and short term (days) at 4 °C. As with all antibodies avoid freeze/thaw cycles.
CLONALITY:	Polyclonal
CONJUGATE:	Unconjugated

Additional Info

ALTERNATE NAMES:	USP33, Deubiquitinating enzyme 33, KIAA1097, HVDU1, VDU1, Ubiquitin thioesterase 33, Ubiquitin thiolesterase 33, Ubiquitin specific protease 33
ACCESSION NO.:	Q8TEY7
PROTEIN GI NO.:	116242838
OFFICIAL SYMBOL:	USP33
GENE ID:	23032

Background

BACKGROUND:

VDU1 (pVHL-interacting deubiquitinating enzyme-1), is a substrate of von Hippel-Lindau tumor suppressor protein (pVHL) E3 ligase complex. VDU1 contains the signature motifs of the ubiquitin-specific processing protease family and possesses deubiquitinating activity. VDU1 and VDU2 define a subfamily of ubiquitin specific processing proteases.

FOR RESEARCH USE ONLY

December 13, 2016