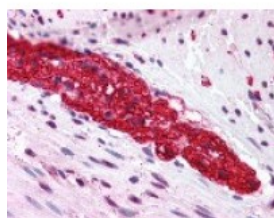




## GRM5 Antibody

CATALOG NUMBER: 48-372



Immunohistochemistry staining of GRM5  
in colon, myenteric plexus tissue using  
GRM5 Antibody.

### Specifications

<b>SPECIES REACTIVITY:</b>	Bat, Bovine, Chicken, Dog, Gibbon, Hamster, Horse, Human, Monkey, Mouse, Pig, Rat
<b>TESTED APPLICATIONS:</b>	IHC
<b>APPLICATIONS:</b>	GRM5 antibody can be used in Western Blot starting at 1:100, and immunohistochemistry starting at 1:100.
<b>USER NOTE:</b>	Optimal dilutions for each application to be determined by the researcher.
<b>SPECIFICITY:</b>	BLAST analysis of the peptide immunogen showed no homology with other human proteins.
<b>IMMUNOGEN:</b>	GRM5 antibody was raised against a peptide located in the N-Terminal extracellular domain of GRM5 (Human).
<b>HOST SPECIES:</b>	Rabbit

### Properties

<b>PURIFICATION:</b>	Immunoaffinity Chromatography
<b>PHYSICAL STATE:</b>	Liquid
<b>BUFFER:</b>	PBS, 0.1% sodium azide.
<b>STORAGE CONDITIONS:</b>	GRM5 antibody should be stored long term (months) at -80 °C and short term (days) at 4 °C. As with all antibodies avoid freeze/thaw cycles.
<b>CLONALITY:</b>	Polyclonal
<b>CONJUGATE:</b>	Unconjugated

### Additional Info

<b>ALTERNATE NAMES:</b>	GRM5, GPRC1E, MGLUR5, Mglur5b, MGlu5
<b>ACCESSION NO.:</b>	P41594
<b>PROTEIN GI NO.:</b>	1709020
<b>OFFICIAL SYMBOL:</b>	GRM5
<b>GENE ID:</b>	2915

### Background

**BACKGROUND:** Group I of the Metabotropic Glutamate Receptors includes GRM1 and GRM5, receptors that have been shown

to activate phospholipase C. Alternative splice variants of GRM5 have been described, but their full-length nature has not been determined. Inflammation results in the activation of mGluR1 and mGluR5 in dorsal horn neurons of the spinal cord, leading to extracellular signal-regulated kinase (ERK) activation, which is required for nociceptive plasticity and enhanced pain. GRM5 is involved in inflammatory mechanical hyperalgesia and potentially in schizophrenia

---

**FOR RESEARCH USE ONLY**

December 13, 2016