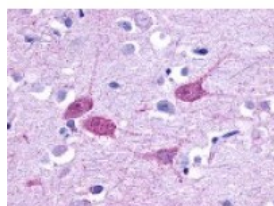




HTR1F Antibody

CATALOG NUMBER: 48-368



Immunohistochemistry staining of HTR1F
in brain cortex tissue using HTR1F
Antibody.

Specifications

SPECIES REACTIVITY:	Chimpanzee, Gibbon, Human, Orangutan
TESTED APPLICATIONS:	IHC
APPLICATIONS:	HTR1F antibody can be used in Western Blot, and immunohistochemistry starting at 1:100.
USER NOTE:	Optimal dilutions for each application to be determined by the researcher.
SPECIFICITY:	BLAST analysis of the peptide immunogen showed no homology with other human proteins.
IMMUNOGEN:	HTR1F antibody was raised against a peptide located in the 3rd cytoplasmic domain of HTR1F (Human).
HOST SPECIES:	Rabbit

Properties

PURIFICATION:	Immunoaffinity Chromatography
PHYSICAL STATE:	Liquid
BUFFER:	PBS, 0.1% sodium azide.
STORAGE CONDITIONS:	HTR1F antibody should be stored long term (months) at -80 °C and short term (days) at 4 °C. As with all antibodies avoid freeze/thaw cycles.
CLONALITY:	Polyclonal
CONJUGATE:	Unconjugated

Additional Info

ALTERNATE NAMES:	HTR1F, 5-HT1F, 5-HT1f receptor, 5HT1F Receptor, 5-HT-1F, 5HT6, HTR1EL, MR77, Serotonin 1f receptor, Serotonin 5-HT-1f receptor, Serotonin receptor 1F
ACCESSION NO.:	P30939
PROTEIN GI NO.:	398967
OFFICIAL SYMBOL:	HTR1F
GENE ID:	3355

Background

BACKGROUND:

5-HT_{1F}, a Serotonin Receptor, is negatively coupled to adenylyl cyclase. Selective 5-HT_{1F} agonists may prove therapeutic in the treatment of migraine headache, lacking the side effects associated with the agonists of the 5-HT_{1B} and 5-HT_{1D} receptors.

FOR RESEARCH USE ONLY

December 13, 2016