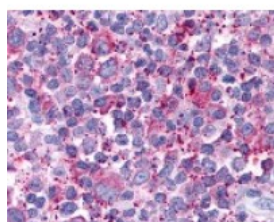




CX3CR1 Antibody

CATALOG NUMBER: 48-367



Immunohistochemistry staining of CX3CR1 in small intestine tissue using CX3CR1 Antibody.

Specifications

SPECIES REACTIVITY:	Human
TESTED APPLICATIONS:	IHC
APPLICATIONS:	CX3CR1 antibody can be used in ELISA, Western Blot starting at 1:500 - 1:1000, and immunohistochemistry starting at 5 ug/mL.
USER NOTE:	Optimal dilutions for each application to be determined by the researcher.
SPECIFICITY:	BLAST analysis of the peptide immunogen showed no homology with other human proteins.
IMMUNOGEN:	CX3CR1 antibody was raised against a peptide located in the 3rd extracellular domain of CX3CR1 (Human).
HOST SPECIES:	Rabbit

Properties

PURIFICATION:	Immunoaffinity Chromatography
PHYSICAL STATE:	Liquid
BUFFER:	PBS, 0.1% sodium azide.
STORAGE CONDITIONS:	CX3CR1 antibody should be stored long term (months) at -80 °C and short term (days) at 4 °C. As with all antibodies avoid freeze/thaw cycles.
CLONALITY:	Polyclonal
CONJUGATE:	Unconjugated

Additional Info

ALTERNATE NAMES:	CX3CR1, Beta chemokine receptor-like 1, C-X3-C CKR-1, Chemokine (C-X3-C) receptor 1, CMKBRL1, CMK-BRL-1, CMKDR1, CMK-BRL1, CX3C chemokine receptor 1, Fkn receptor, GPR13, GPRV28, Fractalkine receptor, G protein-coupled receptor v28, G-protein coupled receptor 13, V28, Chemokine c-x3-c receptor 1, G protein-coupled receptor 13
ACCESSION NO.:	P49238
PROTEIN GI NO.:	1351394
OFFICIAL SYMBOL:	CX3CR1

GENE ID: 1524

Background

BACKGROUND: CX3CR1 a Chemokine Receptor is an HIV coreceptor, as well as a leukocyte chemotactic/adhesion receptor for fractalkine, also known as neurotactin. CX3CR1 mediates chemotactic responses to the soluble form of fractalkine in neutrophils and T cells, and cytoadhesion to cells expressing membrane-anchored fractalkine, such as monocytes, T cells, and neutrophils. Cells transfected with CX3CR1 exhibited chemotaxis and transient increases in intracellular calcium concentration when exposed to fractalkine.

FOR RESEARCH USE ONLY

December 13, 2016