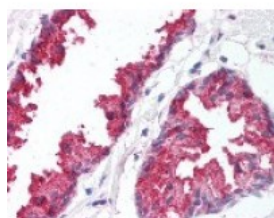




## BACE1 Antibody

CATALOG NUMBER: 48-359



Immunohistochemistry staining of BACE1  
in prostate tissue using BACE1 Antibody.

### Specifications

<b>SPECIES REACTIVITY:</b>	Gibbon, Gorilla, Human, Monkey
<b>TESTED APPLICATIONS:</b>	IHC
<b>APPLICATIONS:</b>	BACE1 antibody can be used in ELISA, Western Blot starting at 1:500 - 1:1000, and immunohistochemistry starting at 5 ug/mL.
<b>USER NOTE:</b>	Optimal dilutions for each application to be determined by the researcher.
<b>SPECIFICITY:</b>	BLAST analysis of the peptide immunogen showed no homology with other human proteins, except CPD (39%).
<b>IMMUNOGEN:</b>	BACE1 antibody was raised against a peptide located in the near N-Terminus of BACE1 (Human).
<b>HOST SPECIES:</b>	Rabbit

### Properties

<b>PURIFICATION:</b>	Immunoaffinity Chromatography
<b>PHYSICAL STATE:</b>	Liquid
<b>BUFFER:</b>	PBS, 0.1% sodium azide.
<b>STORAGE CONDITIONS:</b>	BACE1 antibody should be stored long term (months) at -80 °C and short term (days) at 4 °C. As with all antibodies avoid freeze/thaw cycles.
<b>CLONALITY:</b>	Polyclonal
<b>CONJUGATE:</b>	Unconjugated

### Additional Info

<b>ALTERNATE NAMES:</b>	BACE1, APP beta-secretase, Asp 2, ASP2, Aspartyl protease 2, Aspartylprotease 2, Beta-secretase, Beta-site APP-cleaving enzyme, BACE, HSPC104, KIAA1149, B-Secretase, Beta-secretase 1, Memapsin-2
<b>ACCESSION NO.:</b>	P56817
<b>PROTEIN GI NO.:</b>	296434407
<b>OFFICIAL SYMBOL:</b>	BACE1
<b>GENE ID:</b>	23621

### Background

**BACKGROUND:**

Bace 1 is responsible for the proteolytic processing of the amyloid precursor protein (APP). Cleaves at the N-terminus of the A-beta peptide sequence, between residues 671 and 672 of APP, leads to the generation and extracellular release of beta-cleaved soluble APP, and a corresponding cell-associated C-terminal fragment which is later released by gamma-secretase.

---

**FOR RESEARCH USE ONLY**

December 13, 2016