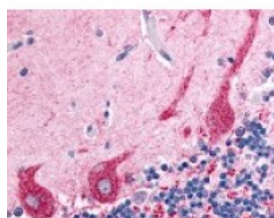




Protein Kinase C zeta Antibody

CATALOG NUMBER: 48-355



Immunohistochemistry staining of Protein Kinase C zeta in cerebellum tissue using Protein Kinase C zeta Antibody.

Specifications

| | |
|-----------------------------|--|
| SPECIES REACTIVITY: | Gorilla, Human |
| TESTED APPLICATIONS: | ELISA, IHC |
| APPLICATIONS: | Protein Kinase C zeta antibody can be used in ELISA, and immunohistochemistry starting at 5 ug/mL. |
| USER NOTE: | Optimal dilutions for each application to be determined by the researcher. |
| SPECIFICITY: | BLAST analysis of the peptide immunogen showed no homology with other human proteins. |
| IMMUNOGEN: | Protein Kinase C zeta antibody was raised against a peptide located in the near N-Terminus of Protein Kinase C zeta (Human). |
| HOST SPECIES: | Rabbit |

Properties

| | |
|----------------------------|--|
| PURIFICATION: | Immunoaffinity Chromatography |
| PHYSICAL STATE: | Liquid |
| BUFFER: | PBS, 0.1% sodium azide. |
| STORAGE CONDITIONS: | Protein Kinase C zeta antibody should be stored long term (months) at -80 °C and short term (days) at 4 °C. As with all antibodies avoid freeze/thaw cycles. |
| CLONALITY: | Polyclonal |
| CONJUGATE: | Unconjugated |

Additional Info

| | |
|-------------------------|--|
| ALTERNATE NAMES: | PRKCZ, PKC-ZETA, PKC2, PkcZ, PKCzeta, Protein kinase c zeta, Protein kinase C zeta type, NPKC-zeta, PKC Zeta, Protein kinase C, zeta, Protein kinase Czeta |
| ACCESSION NO.: | Q05513 |
| PROTEIN GI NO.: | 68067736 |
| OFFICIAL SYMBOL: | PRKCZ |
| GENE ID: | 5590 |

FOR RESEARCH USE ONLY

December 13, 2016