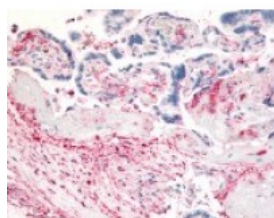




## DPP4 Antibody

CATALOG NUMBER: 48-349



Immunohistochemistry staining of DPP4 in placenta tissue using DPP4 Antibody.

### Specifications

<b>SPECIES REACTIVITY:</b>	Gibbon, Gorilla, Human, Monkey, Orangutan
<b>TESTED APPLICATIONS:</b>	IHC
<b>APPLICATIONS:</b>	DPP4 antibody can be used in ELISA, Western Blot, immunohistochemistry starting at 5 ug/mL, and immunofluorescence starting at 10 ug/mL.
<b>USER NOTE:</b>	Optimal dilutions for each application to be determined by the researcher.
<b>SPECIFICITY:</b>	BLAST analysis of the peptide immunogen showed no homology with other human proteins.
<b>IMMUNOGEN:</b>	DPP4 antibody was raised against a peptide located near the internal domain of DPP4 (Human).
<b>HOST SPECIES:</b>	Rabbit

### Properties

<b>PURIFICATION:</b>	Immunoaffinity Chromatography
<b>PHYSICAL STATE:</b>	Liquid
<b>BUFFER:</b>	PBS, 0.1% sodium azide.
<b>STORAGE CONDITIONS:</b>	DPP4 antibody should be stored long term (months) at -80 °C and short term (days) at 4 °C. As with all antibodies avoid freeze/thaw cycles.
<b>CLONALITY:</b>	Polyclonal
<b>CONJUGATE:</b>	Unconjugated

### Additional Info

<b>ALTERNATE NAMES:</b>	DPP4, ADCP-2, ADABP, Dipeptidyl peptidase IV, Dipeptidyl-peptidase 4, DPPIV, ADCP2, T-cell activation antigen CD26, CD26, CD26 antigen, Dipeptidyl peptidase 4, Dipeptidylpeptidase 4, DPP IV, TP103
<b>ACCESSION NO.:</b>	P27487
<b>PROTEIN GI NO.:</b>	1352311
<b>OFFICIAL SYMBOL:</b>	DPP4
<b>GENE ID:</b>	1803

### Background

