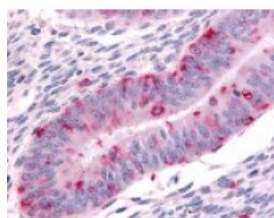




DPP8 Antibody

CATALOG NUMBER: 48-346



Immunohistochemistry staining of DPP8 in uterus tissue using DPP8 Antibody.

Specifications

SPECIES REACTIVITY:	Bat, Bovine, Dog, Gibbon, Gorilla, Horse, Human, Monkey, Pig
TESTED APPLICATIONS:	IHC
APPLICATIONS:	DPP8 antibody can be used in ELISA, Western Blot, and immunohistochemistry starting at 5 ug/mL.
USER NOTE:	Optimal dilutions for each application to be determined by the researcher.
SPECIFICITY:	BLAST analysis of the peptide immunogen showed no homology with other human proteins, except DPP9 (56%).
IMMUNOGEN:	DPP8 antibody was raised against a peptide located in the N-Terminal domain of DPP8 (Human).
HOST SPECIES:	Rabbit

Properties

PURIFICATION:	Immunoaffinity Chromatography
PHYSICAL STATE:	Liquid
BUFFER:	PBS, 0.1% sodium azide.
STORAGE CONDITIONS:	DPP8 antibody should be stored long term (months) at -80 °C and short term (days) at 4 °C. As with all antibodies avoid freeze/thaw cycles.
CLONALITY:	Polyclonal
CONJUGATE:	Unconjugated

Additional Info

ALTERNATE NAMES:	DPP8, Dipeptidyl-peptidase 8, DPRP1, Dipeptidyl peptidase VIII, Dipeptidylpeptidase 8, DPRP-1, Dipeptidyl peptidase 8, MSTP141, Prolyl dipeptidase DPP8, DP8, DPP VIII
ACCESSION NO.:	Q6V1X1
PROTEIN GI NO.:	67460301
OFFICIAL SYMBOL:	DPP8
GENE ID:	54878

Background

