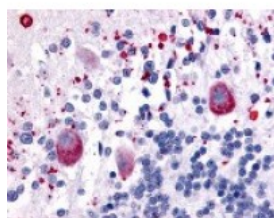




## HTR7 Antibody

CATALOG NUMBER: 48-340



Immunohistochemistry staining of HTR7 in cerebellum tissue using HTR7 Antibody.

### Specifications

<b>SPECIES REACTIVITY:</b>	Bat, Bovine, Dog, Gibbon, Gorilla, Guinea Pig, Hamster, Horse, Human, Monkey, Mouse, Pig, Rat
<b>TESTED APPLICATIONS:</b>	ELISA, IHC
<b>APPLICATIONS:</b>	HTR7 antibody can be used in ELISA, and immunohistochemistry starting at 20 ug/mL.
<b>USER NOTE:</b>	Optimal dilutions for each application to be determined by the researcher.
<b>SPECIFICITY:</b>	BLAST analysis of the peptide immunogen showed no homology with other human proteins.
<b>IMMUNOGEN:</b>	HTR7 antibody was raised against a peptide located near the C-Terminal region of HTR7 (Human).
<b>HOST SPECIES:</b>	Rabbit

### Properties

<b>PURIFICATION:</b>	Immunoaffinity Chromatography
<b>PHYSICAL STATE:</b>	Liquid
<b>BUFFER:</b>	PBS, 0.1% sodium azide.
<b>STORAGE CONDITIONS:</b>	HTR7 antibody should be stored long term (months) at -80 °C and short term (days) at 4 °C. As with all antibodies avoid freeze/thaw cycles.
<b>CLONALITY:</b>	Polyclonal
<b>CONJUGATE:</b>	Unconjugated

### Additional Info

<b>ALTERNATE NAMES:</b>	HTR7, 5-HT7, 5-HT7 receptor, 5-HT-7, 5-hydroxytryptamine 7 receptor, 5HT7, 5-HT-X, 5-hydroxytryptamine receptor 7, 5HT7 Receptor, HT7, Serotonin 5-HT7 receptor, Serotonin receptor 7
<b>ACCESSION NO.:</b>	P34969
<b>PROTEIN GI NO.:</b>	8488960
<b>OFFICIAL SYMBOL:</b>	HTR7
<b>GENE ID:</b>	3363

### Background

<b>BACKGROUND:</b>	5-HT7 Receptor is a Serotonin Receptor with several functions, including regulation of the circadian rhythm and
--------------------	---

mediation of smooth-muscle relaxation in the vasculature and GI tract. This receptor has been implicated in depression, autism, and other neuropsychiatric disorders. Three protein isoforms have been documented: isoform a: 445aa; isoform b: 432aa; isoform d: 479aa.

---

**FOR RESEARCH USE ONLY**

December 13, 2016